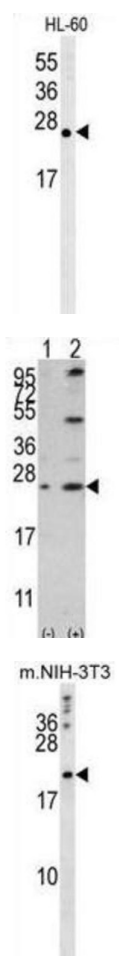


Bcl-w (BH3 Domain Specific) Antibody

Catalogue No.: abx027181



Bcl-w is a member of the BCL-2 protein family. The proteins of this family form hetero or homodimers and act as anti and pro-apoptotic regulators. Expression of this gene in cells has been shown to contribute to reduced cell apoptosis under cytotoxic conditions. Studies of the related gene in mice indicated a role in the survival of NGF and BDNF-dependent neurons. Mutation and knockout studies of the mouse gene demonstrated an essential role in adult spermatogenesis.

Target: Bcl-w (BH3 Domain Specific)

Clonality: Polyclonal

Reactivity: Human, Mouse

Tested Applications: ELISA, WB, IHC

Host: Rabbit

Recommended dilutions: WB: 1/1000, IHC-P: 1/50 - 1/100. Not tested in IHC-F. Optimal dilutions/concentrations should be determined by the end user.

Datasheet

Version: 3.0.0
Revision date: 10 Oct 2025



Conjugation:	Unconjugated
Immunogen:	KLH-conjugated synthetic peptide between 24-59 amino acids from human Bcl.
Isotype:	IgG
Form:	Liquid
Purification:	Purified through a protein G column, eluted with high and low pH buffers and neutralized immediately, followed by dialysis against PBS.
Storage:	Aliquot and store at -20°C. Avoid repeated freeze/thaw cycles.
UniProt Primary AC:	Q92843 (UniProt , ExPASy)
NCBI Accession:	NP_001186768.1, NP_004041.1
Molecular Weight:	Calculated MW: 20.7 kDa
Buffer:	PBS containing 0.09% sodium azide.
Specificity:	Predicted to react with Cow BCL2L2.
Note:	THIS PRODUCT IS FOR RESEARCH USE ONLY. NOT FOR USE IN DIAGNOSTIC, THERAPEUTIC OR COSMETIC PROCEDURES. NOT FOR HUMAN OR ANIMAL CONSUMPTION.