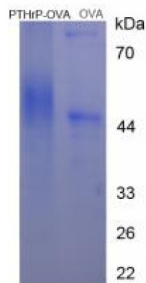


Mouse Parathyroid Hormone-Related Protein / PTHrP (PTHLH) Peptide (OVA)

Catalogue No.: abx651120



SDS-PAGE analysis of Parathyroid Hormone Related Protein Protein (OVA).

Parathyroid Hormone-Related Protein / PTHrP Peptide (OVA) is a Mouse protein conjugated to OVA.

Target: Parathyroid Hormone-Related Protein / PTHrP

Origin: Mouse

Expression: Synthetic

Tested Applications: WB, SDS-PAGE

Conjugation: OVA

Form: Lyophilized

Purity: > 90%

Reconstitution: To keep the original salt concentration, we recommend reconstituting to the original concentration prior to lyophilization (see Concentration) in ddH₂O. If a lower concentration is required, dilute in PBS, pH 7.4. If a higher concentration is required, the product can be reconstituted directly in PBS, pH 7.4, though please note that this will change the overall salt concentration. The stock concentration should be between 0.1-1.0 mg/ml. Do not vortex.

Storage: Store at 2-8 °C for up to one month. Store at -80 °C for up to one year. Avoid repeated freeze/thaw cycles.

UniProt Primary AC: P22858 ([UniProt](#), [ExPASy](#))

Gene Symbol: PTHLH

GeneID: [19227](#)

Datasheet

Version: 3.0.0

Revision date: 13 May 2025



KEGG: mmu:19227

String: [10090.ENSMUSP00000051433](#)

Sequence Fragment: Thr69-Pro84

Buffer: Prior to lyophilization: PBS, pH 7.4.

Activity: Not tested

Concentration: Prior to lyophilization: 200 µg/ml

Note: THIS PRODUCT IS FOR RESEARCH USE ONLY. NOT FOR USE IN DIAGNOSTIC, THERAPEUTIC OR COSMETIC PROCEDURES. NOT FOR HUMAN OR ANIMAL CONSUMPTION.

For Reference Only