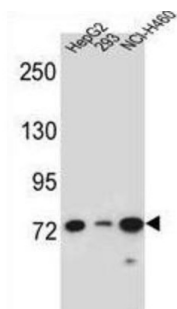
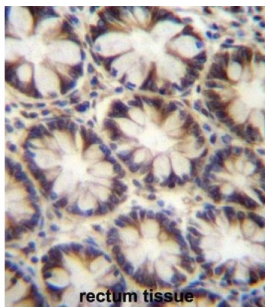


Ligand of Numb Protein X 2 (LNX2) Antibody

Catalogue No.: abx027188



LNX2 (Ligand of numb-protein X 2) is a multimodular protein that binds to NUMB via the NPXY motif. It may serve as a molecular scaffold that localizes unrelated, interacting proteins, such as NUMB, to specific subcellular sites.

Target:	Ligand of Numb Protein X 2 (LNX2)
Clonality:	Polyclonal
Reactivity:	Human
Tested Applications:	ELISA, WB, IHC
Host:	Rabbit
Recommended dilutions:	WB: 1/1000, IHC-P: 1/10 - 1/50. Not tested in IHC-F. Optimal dilutions/concentrations should be determined by the end user.
Conjugation:	Unconjugated
Immunogen:	KLH-conjugated synthetic peptide between 551-579 amino acids from the C-terminal region of human LNX2.
Isotype:	IgG
Form:	Liquid

Datasheet

Version: 3.0.0
Revision date: 09 Jun 2025



Purification:	Purified through a protein A column, followed by peptide affinity purification.
Storage:	Aliquot and store at -20°C. Avoid repeated freeze/thaw cycles.
UniProt Primary AC:	Q8N448 (UniProt , ExPASy)
Gene Symbol:	LNK2
KEGG:	hsa:222484
String:	9606.ENSP00000325929
Molecular Weight:	Calculated MW: 76 kDa
Buffer:	PBS containing 0.09% sodium azide.
Note:	THIS PRODUCT IS FOR RESEARCH USE ONLY. NOT FOR USE IN DIAGNOSTIC, THERAPEUTIC OR COSMETIC PROCEDURES. NOT FOR HUMAN OR ANIMAL CONSUMPTION.

For Reference Only