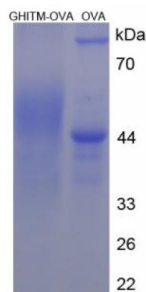


Human Growth Hormone Inducible Transmembrane Protein (GHITM) Peptide (OVA)

Catalogue No.: abx651263



SDS-PAGE analysis of Growth Hormone Inducible Transmembrane Protein (OVA).

Growth Hormone Inducible Transmembrane Protein Peptide (OVA) is a Human protein conjugated to OVA.

Target:	Growth Hormone Inducible Transmembrane Protein
Origin:	Human
Expression:	Synthetic
Tested Applications:	WB, SDS-PAGE
Conjugation:	OVA
Form:	Lyophilized
Purity:	> 90%
Reconstitution:	To keep the original salt concentration, we recommend reconstituting to the original concentration prior to lyophilization (see Concentration) in ddH ₂ O. If a lower concentration is required, dilute in PBS, pH 7.4. If a higher concentration is required, the product can be reconstituted directly in PBS, pH 7.4, though please note that this will change the overall salt concentration. The stock concentration should be between 0.1-1.0 mg/ml. Do not vortex.
Storage:	Store at 2-8 °C for up to one month. Store at -80 °C for up to one year. Avoid repeated freeze/thaw cycles.
Sequence Fragment:	Pro41-Arg54
Buffer:	Prior to lyophilization: PBS, pH 7.4.
Activity:	Not tested

Datasheet

Version: 2.0.0

Revision date: 05 Jul 2025



Concentration: Prior to lyophilization: 200 µg/ml

Note: THIS PRODUCT IS FOR RESEARCH USE ONLY. NOT FOR USE IN DIAGNOSTIC, THERAPEUTIC OR COSMETIC PROCEDURES. NOT FOR HUMAN OR ANIMAL CONSUMPTION.

For Reference Only