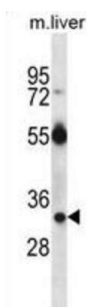
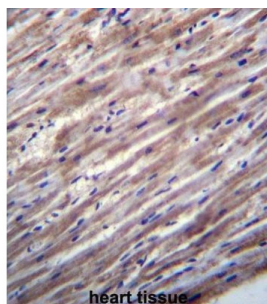


## RAS, Dexamethasone-Induced 1 (RASD1) Antibody

Catalogue No.: abx027211



This gene encodes a Ras-related protein that is stimulated by dexamethasone. The exact function of this gene is unknown, but it may play a role in dexamethasone-induced alterations in cell morphology, growth and cell-extracellular matrix interactions. In addition, studies of a similar rat protein suggest that it functions as a novel physiologic nitric oxide (NO) effector. The gene product belongs to the Ras superfamily of small GTPases.

**Target:** RAS, Dexamethasone-Induced 1 (RASD1)

**Clonality:** Polyclonal

**Reactivity:** Mouse

**Tested Applications:** ELISA, WB, IHC

**Host:** Rabbit

**Recommended dilutions:** WB: 1/1000, IHC-P: 1/10 - 1/50. Not tested in IHC-F. Optimal dilutions/concentrations should be determined by the end user.

**Conjugation:** Unconjugated

**Immunogen:** KLH-conjugated synthetic peptide between 248-277 amino acids from the C-terminal region of human RASD1.

**Isotype:** IgG

# Datasheet

Version: 4.0.0

Revision date: 20 Aug 2025



<b>Form:</b>	Liquid
<b>Purification:</b>	Purified through a protein A column, followed by peptide affinity purification.
<b>Storage:</b>	Aliquot and store at -20°C. Avoid repeated freeze/thaw cycles.
<b>UniProt Primary AC:</b>	Q9Y272 ( <a href="#">UniProt</a> , <a href="#">ExPASy</a> )
<b>Gene Symbol:</b>	RASD1
<b>String:</b>	<a href="#">9606.ENSP00000225688</a>
<b>Molecular Weight:</b>	Calculated MW: 31.6 kDa
<b>Buffer:</b>	PBS containing 0.09% sodium azide.
<b>Note:</b>	THIS PRODUCT IS FOR RESEARCH USE ONLY. NOT FOR USE IN DIAGNOSTIC, THERAPEUTIC OR COSMETIC PROCEDURES. NOT FOR HUMAN OR ANIMAL CONSUMPTION.

For Reference Only