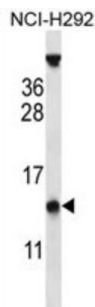


PYDC1 Antibody

Catalogue No.: abx027224



PYDC1 associates with apoptosis-associated specklike protein containing a CARD domain (ASC) and modulates its ability to collaborate with pyrin and cryopyrin in NF-kappa-B and pro-caspase-1 activation. Suppresses kinase activity of NF-kappa-B inhibitor kinase (IKK) complex, expression of NF-kappa-B inducible genes and inhibits NF-kappa-B activation by cytokines and LPS.

Target:	PYDC1
Clonality:	Polyclonal
Reactivity:	Human
Tested Applications:	ELISA, WB
Host:	Rabbit
Recommended dilutions:	WB: 1/1000. Optimal dilutions/concentrations should be determined by the end user.
Conjugation:	Unconjugated
Immunogen:	KLH-conjugated synthetic peptide between 13-42 amino acids from the Central region of human PYDC1.
Isotype:	IgG
Form:	Liquid
Purification:	Purified through a protein A column, followed by peptide affinity purification.
Storage:	Aliquot and store at -20°C. Avoid repeated freeze/thaw cycles.
UniProt Primary AC:	Q8WXC3 (UniProt , ExpASY)
Gene Symbol:	PYDC1

Datasheet

Version: 2.0.0

Revision date: 30 May 2025



KEGG: hsa:260434

String: [9606.ENSP00000304336](#)

Molecular Weight: Calculated MW: 10.1 kDa

Buffer: PBS containing 0.09% sodium azide.

Note: THIS PRODUCT IS FOR RESEARCH USE ONLY. NOT FOR USE IN DIAGNOSTIC, THERAPEUTIC OR COSMETIC PROCEDURES. NOT FOR HUMAN OR ANIMAL CONSUMPTION.

For Reference Only