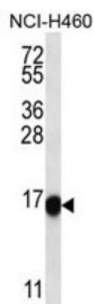


Putative Transmembrane Protein CXorf1 (CX001) Antibody

Catalogue No.: abx027253



This intronless gene is expressed in the hippocampus and maps close to a candidate region for several X-linked mental retardation (XLMR) syndromes. It is conserved in primates, cow, and horse, but not found in mouse and rat. The exact function of this gene is not known, but on the basis of its physical location and expression pattern, it is proposed to have an important function in the brain.

| | |
|-------------------------------|---|
| Target: | Putative Transmembrane Protein CXorf1 (CX001) |
| Clonality: | Polyclonal |
| Reactivity: | Human |
| Tested Applications: | ELISA, WB |
| Host: | Rabbit |
| Recommended dilutions: | WB: 1/1000. Optimal dilutions/concentrations should be determined by the end user. |
| Conjugation: | Unconjugated |
| Immunogen: | KLH-conjugated synthetic peptide between 62-90 amino acids from the C-terminal region of human CX001. |
| Isotype: | IgG |
| Form: | Liquid |
| Purification: | Purified through a protein A column, followed by peptide affinity purification. |
| Storage: | Aliquot and store at -20°C. Avoid repeated freeze/thaw cycles. |
| UniProt Primary AC: | O96002 (UniProt , ExPASy) |
| Gene Symbol: | CXorf1 |

Datasheet

Version: 3.0.0

Revision date: 15 Sep 2025



Molecular Weight: Calculated MW: 13.5 kDa

Buffer: PBS containing 0.09% sodium azide.

Note: THIS PRODUCT IS FOR RESEARCH USE ONLY. NOT FOR USE IN DIAGNOSTIC, THERAPEUTIC OR COSMETIC PROCEDURES. NOT FOR HUMAN OR ANIMAL CONSUMPTION.

For Reference Only