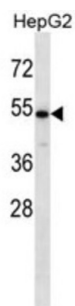


Carbohydrate Sulfotransferase 9 (CHST9) Antibody

Catalogue No.: abx027266



Sulfate groups in carbohydrates confer highly specific functions on glycoproteins, glycolipids, and proteoglycans and are critical for cell-cell interaction, signal transduction, and embryonic development. Sulfotransferases, such as CHST9, carry out sulfation of carbohydrates (Hiraoka et al., 2001 [PubMed 11445554]).

Target:	Carbohydrate Sulfotransferase 9 (CHST9)
Clonality:	Polyclonal
Reactivity:	Human
Tested Applications:	ELISA, WB
Host:	Rabbit
Recommended dilutions:	WB: 1/1000. Optimal dilutions/concentrations should be determined by the end user.
Conjugation:	Unconjugated
Immunogen:	KLH-conjugated synthetic peptide between 21-50 amino acids from the N-terminal region of human CHST9.
Isotype:	IgG
Form:	Liquid
Purification:	Purified through a protein A column, followed by peptide affinity purification.
Storage:	Aliquot and store at -20°C. Avoid repeated freeze/thaw cycles.
UniProt Primary AC:	Q7L1S5 (UniProt , ExPASy)
Gene Symbol:	CHST9

Datasheet

Version: 3.0.0

Revision date: 23 Jun 2025



Molecular Weight: Calculated MW: 52.1 kDa

Buffer: PBS containing 0.09% sodium azide.

Note: THIS PRODUCT IS FOR RESEARCH USE ONLY. NOT FOR USE IN DIAGNOSTIC, THERAPEUTIC OR COSMETIC PROCEDURES. NOT FOR HUMAN OR ANIMAL CONSUMPTION.

For Reference Only