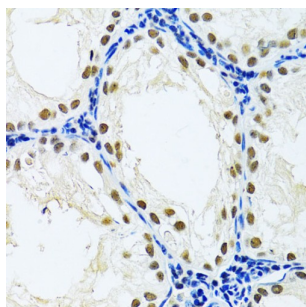
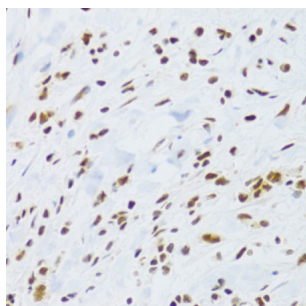


## DNA Damage-Binding Protein 1 (DDB1) Antibody

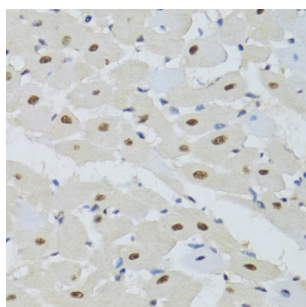
Catalogue No.: abx002127



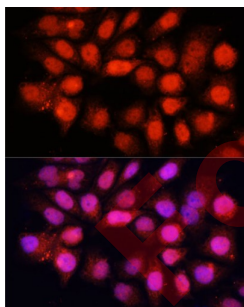
Immunohistochemistry of paraffin-embedded Rat testis using DDB1 Antibody (1/100 dilution, 40x lens).



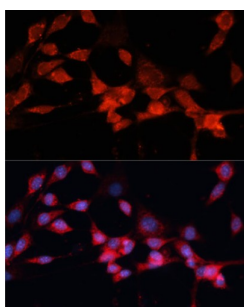
Immunohistochemistry of paraffin-embedded Human gastric cancer using DDB1 Antibody (1/100 dilution, 40x lens).



Immunohistochemistry of paraffin-embedded Mouse heart using DDB1 Antibody (1/100 dilution, 40x lens).



Immunofluorescence analysis of HeLa cells using DDB1 Antibody (1/100 dilution, 40x lens). Blue: DAPI for nuclear staining.



Immunofluorescence analysis of NIH-3T3 cells using DDB1 Antibody (1/100 dilution, 40x lens). Blue: DAPI for nuclear staining.

# Datasheet

Version: 3.0.0  
Revision date: 22 May 2025



DDB1 Antibody is a Rabbit Polyclonal antibody against DDB1. The protein encoded by this gene is the large subunit (p127) of the heterodimeric DNA damage-binding (DDB) complex while another protein (p48) forms the small subunit. This protein complex functions in nucleotide-excision repair and binds to DNA following UV damage. Defective activity of this complex causes the repair defect in patients with xeroderma pigmentosum complementation group E (XPE) - an autosomal recessive disorder characterized by photosensitivity and early onset of carcinomas. However, it remains for mutation analysis to demonstrate whether the defect in XPE patients is in this gene or the gene encoding the small subunit. In addition, Best vitelliform macular dystrophy is mapped to the same region as this gene on 11q, but no sequence alternations of this gene are demonstrated in Best disease patients. The protein encoded by this gene also functions as an adaptor molecule for the cullin 4 (CUL4) ubiquitin E3 ligase complex by facilitating the binding of substrates to this complex and the ubiquitination of proteins.

<b>Target:</b>	DNA Damage-Binding Protein 1 (DDB1)
<b>Clonality:</b>	Polyclonal
<b>Reactivity:</b>	Human, Mouse, Rat
<b>Tested Applications:</b>	IHC, IF/ICC
<b>Host:</b>	Rabbit
<b>Recommended dilutions:</b>	IHC-P: 1/50 - 1/100, IF/ICC: 1/50 - 1/100. Not tested in IHC-F. Optimal dilutions/concentrations should be determined by the end user.
<b>Conjugation:</b>	Unconjugated
<b>Immunogen:</b>	A synthetic peptide corresponding to human DDB1
<b>Isotype:</b>	IgG
<b>Form:</b>	Liquid
<b>Purification:</b>	Purified by affinity chromatography.
<b>Storage:</b>	Aliquot and store at -20°C. Avoid repeated freeze/thaw cycles.
<b>UniProt Primary AC:</b>	Q16531 ( <a href="#">UniProt</a> , <a href="#">ExPASy</a> )
<b>Gene Symbol:</b>	DDB1
<b>GeneID:</b>	<a href="#">1642</a>
<b>NCBI Accession:</b>	NP_001914.3
<b>KEGG:</b>	hsa:1642
<b>String:</b>	<a href="#">9606.ENSP00000301764</a>

# Datasheet

Version: 3.0.0

Revision date: 22 May 2025



**Buffer:** PBS, pH 7.3, containing 0.02% sodium azide, 50% glycerol.

**Concentration:** 1 mg/ml

**Note:** THIS PRODUCT IS FOR RESEARCH USE ONLY. NOT FOR USE IN DIAGNOSTIC, THERAPEUTIC OR COSMETIC PROCEDURES. NOT FOR HUMAN OR ANIMAL CONSUMPTION.

For Reference Only