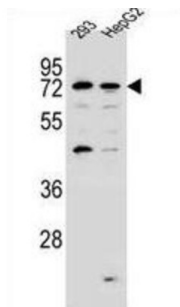


GTPase IMAP Family Member 8 (GIMAP8) Antibody

Catalogue No.: abx027293



This gene encodes a protein belonging to the GTP-binding superfamily and to the immuno-associated nucleotide (IAN) subfamily of nucleotide-binding proteins. In humans, the IAN subfamily genes are located in a cluster at 7q36.1.

Target:	GTPase IMAP Family Member 8 (GIMAP8)
Clonality:	Polyclonal
Reactivity:	Human
Tested Applications:	ELISA, WB
Host:	Rabbit
Recommended dilutions:	WB: 1/1000. Optimal dilutions/concentrations should be determined by the end user.
Conjugation:	Unconjugated
Immunogen:	KLH-conjugated synthetic peptide between 205-233 amino acids from the N-terminal region of human GIMAP8.
Isotype:	IgG
Form:	Liquid
Purification:	Purified through a protein A column, followed by peptide affinity purification.
Storage:	Aliquot and store at -20°C. Avoid repeated freeze/thaw cycles.
UniProt Primary AC:	Q8ND71 (UniProt , ExPASy)
Gene Symbol:	GIMAP8

Datasheet

Version: 4.0.0

Revision date: 20 Jul 2025



KEGG: hsa:155038

String: [9606.ENSP00000305107](#)

Molecular Weight: Calculated MW: 74.9 kDa

Buffer: PBS containing 0.09% sodium azide.

Note: THIS PRODUCT IS FOR RESEARCH USE ONLY. NOT FOR USE IN DIAGNOSTIC, THERAPEUTIC OR COSMETIC PROCEDURES. NOT FOR HUMAN OR ANIMAL CONSUMPTION.

For Reference Only