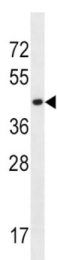
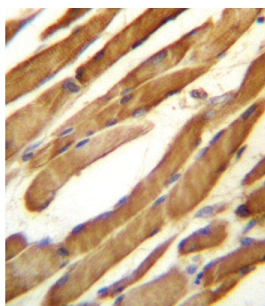
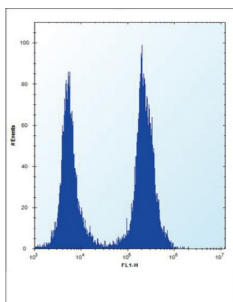


SLC16A10 Antibody

Catalogue No.: abx027294



SLC16A10 is a member of a family of plasma membrane amino acid transporters that mediate the Na (+) independent transport of aromatic amino acids across the plasma membrane.

Target: SLC16A10

Clonality: Polyclonal

Reactivity: Human

Tested Applications: ELISA, WB, IHC, FCM

Host: Rabbit

Recommended dilutions: WB: 1/1000, IHC-P: 1/10 - 1/50, FCM: 1/10 - 1/50. Not tested in IHC-F. Optimal dilutions/concentrations should be determined by the end user.

Datasheet

Version: 3.0.0
Revision date: 03 Sep 2025



Conjugation:	Unconjugated
Immunogen:	KLH-conjugated synthetic peptide between 301-329 amino acids from the C-terminal region of human SLC16A10.
Isotype:	IgG
Form:	Liquid
Purification:	Purified through a protein A column, followed by peptide affinity purification.
Storage:	Aliquot and store at -20°C. Avoid repeated freeze/thaw cycles.
UniProt Primary AC:	Q8TF71 (UniProt , ExPASy)
Gene Symbol:	SLC16A10
KEGG:	hsa:117247
String:	9606.ENSP00000357844
Molecular Weight:	Calculated MW: 55.5 kDa
Buffer:	PBS containing 0.09% sodium azide.
Note:	THIS PRODUCT IS FOR RESEARCH USE ONLY. NOT FOR USE IN DIAGNOSTIC, THERAPEUTIC OR COSMETIC PROCEDURES. NOT FOR HUMAN OR ANIMAL CONSUMPTION.