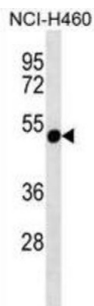
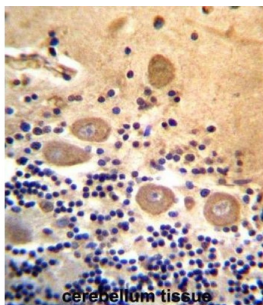


Rhabdoid Tumor Deletion Region Protein 1 (RTDR1) Antibody

Catalogue No.: abx027299



This gene encodes a protein with no known function but with slight similarity to a yeast vacuolar protein. The gene is located in a region deleted in pediatric rhabdoid tumors of the brain, kidney and soft tissues, but mutations in this gene have not been associated with the disease.

Target:	Rhabdoid Tumor Deletion Region Protein 1 (RTDR1)
Clonality:	Polyclonal
Reactivity:	Human
Tested Applications:	ELISA, WB, IHC
Host:	Rabbit
Recommended dilutions:	WB: 1/1000, IHC-P: 1/10 - 1/50. Not tested in IHC-F. Optimal dilutions/concentrations should be determined by the end user.
Conjugation:	Unconjugated
Immunogen:	KLH-conjugated synthetic peptide between 17-45 amino acids from the N-terminal region of human RTDR1.
Isotype:	IgG
Form:	Liquid

Datasheet

Version: 2.0.0

Revision date: 23 Aug 2025



Purification:	Purified through a protein A column, followed by peptide affinity purification.
Storage:	Aliquot and store at -20°C. Avoid repeated freeze/thaw cycles.
UniProt Primary AC:	Q9UHP6 (UniProt , ExPASy)
Gene Symbol:	RSPH14
String:	9606.ENSP00000216036
Molecular Weight:	Calculated MW: 38.6 kDa
Buffer:	PBS containing 0.09% sodium azide.
Note:	THIS PRODUCT IS FOR RESEARCH USE ONLY. NOT FOR USE IN DIAGNOSTIC, THERAPEUTIC OR COSMETIC PROCEDURES. NOT FOR HUMAN OR ANIMAL CONSUMPTION.

For Reference Only