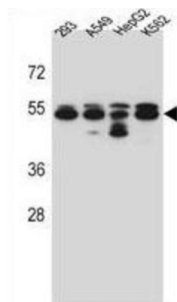


## Tubulin Beta-8 Chain (TUBB8) Antibody

Catalogue No.: abx027305



Tubulin is the major constituent of microtubules. It binds two moles of GTP, one at an exchangeable site on the beta chain and one at a non-exchangeable site on the alpha-chain (By similarity).

**Target:** Tubulin Beta-8 Chain (TUBB8)

**Clonality:** Polyclonal

**Reactivity:** Human

**Tested Applications:** ELISA, WB

**Host:** Rabbit

**Recommended dilutions:** WB: 1/1000. Optimal dilutions/concentrations should be determined by the end user.

**Conjugation:** Unconjugated

**Immunogen:** KLH-conjugated synthetic peptide between 34-62 amino acids from the N-terminal region of human TUBB8.

**Isotype:** IgG

**Form:** Liquid

**Purification:** Purified through a protein A column, followed by peptide affinity purification.

**Storage:** Aliquot and store at -20°C. Avoid repeated freeze/thaw cycles.

**UniProt Primary AC:** Q3ZCM7 ([UniProt](#), [ExPASy](#))

**KEGG:** hsa:347688

# Datasheet

Version: 3.0.0

Revision date: 02 Sep 2025



**String:** [9606.ENSF00000456206](#)

**Molecular Weight:** Calculated MW: 49.8 kDa

**Buffer:** PBS containing 0.09% sodium azide.

**Note:** THIS PRODUCT IS FOR RESEARCH USE ONLY. NOT FOR USE IN DIAGNOSTIC, THERAPEUTIC OR COSMETIC PROCEDURES. NOT FOR HUMAN OR ANIMAL CONSUMPTION.

For Reference Only