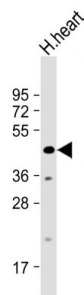


# WD Repeat Domain Phosphoinositide-Interacting Protein 4 / WIPI-4 (WDR45) Antibody

Catalogue No.: abx027335



WB analysis of human heart lysate, using WDR45 Antibody (1/1000 dilution). Predicted band size: 40 kDa. Blocking/Dilution buffer: 5% NFDm/TBST.

This gene encodes a member of the WD repeat protein family. WD repeats are minimally conserved regions of approximately 40 amino acids typically bracketed by gly-his and trp-asn (GH-WD), which may facilitate formation of heterotrimeric or multiprotein complexes. Members of this family are involved in a variety of cellular processes, including cell cycle progression, signal transduction, apoptosis, and gene regulation. This gene has a pseudogene at chromosome 4q31.3. Multiple alternatively spliced transcript variants encoding distinct isoforms have been found for this gene, but the biological validity and full-length nature of some variants have not been determined.

<b>Target:</b>	WD Repeat Domain Phosphoinositide-Interacting Protein 4 / WIPI-4 (WDR45)
<b>Clonality:</b>	Polyclonal
<b>Reactivity:</b>	Human
<b>Tested Applications:</b>	ELISA, WB
<b>Host:</b>	Rabbit
<b>Recommended dilutions:</b>	WB: 1/1000. Optimal dilutions/concentrations should be determined by the end user.
<b>Conjugation:</b>	Unconjugated
<b>Immunogen:</b>	KLH-conjugated synthetic peptide between 17-46 amino acids from the N-terminal region of human WDR45.
<b>Isotype:</b>	IgG
<b>Form:</b>	Liquid
<b>Purification:</b>	Purified through a protein A column, followed by peptide affinity purification.
<b>Storage:</b>	Aliquot and store at -20°C. Avoid repeated freeze/thaw cycles.

# Datasheet

Version: 3.0.0

Revision date: 28 Aug 2025



**UniProt Primary AC:** Q9Y484 ([UniProt](#), [ExPASy](#))

**Gene Symbol:** WDR45

**GeneID:** [11152](#)

**KEGG:** hsa:11152

**String:** [9606.ENSP00000348848](#)

**Molecular Weight:** Calculated MW: 39.9 kDa

**Buffer:** PBS containing 0.09% sodium azide.

**Specificity:** Predicted to react with Mouse, Rat and Zebrafish WDR45.

**Concentration:** 0.45 mg/ml

**Note:** THIS PRODUCT IS FOR RESEARCH USE ONLY. NOT FOR USE IN DIAGNOSTIC, THERAPEUTIC OR COSMETIC PROCEDURES. NOT FOR HUMAN OR ANIMAL CONSUMPTION.

For Reference Only