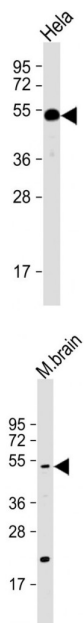


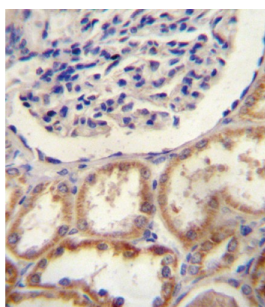
Serine Protease HTRA1 (HTRA1) Antibody

Catalogue No.: abx027340

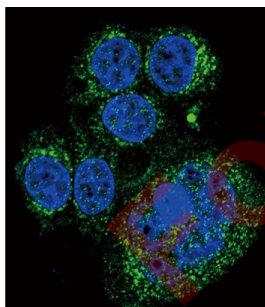


WB analysis of HeLa whole cell lysates (20 µg), using HTRA1 Antibody (1/1000 dilution) and HRP-conjugated Goat anti-Rabbit IgG (H+L) secondary antibody (1/10000 dilution). Predicted band size: 51 kDa. Blocking/Dilution buffer: 5% NFDm/TBST.

WB analysis of mouse brain lysate (20 µg), using HTRA1 Antibody (1/2000 dilution) and HRP-conjugated Goat anti-Rabbit IgG (H+L) secondary antibody (1/10000 dilution). Predicted band size: 51 kDa. Blocking/Dilution buffer: 5% NFDm/TBST.



IHC-P analysis of human kidney tissue, with DAB staining.



IF analysis of HeLa cells, using HTRA1 Antibody and AF488-conjugated Goat anti-Rabbit IgG secondary antibody (green). DAPI was used to stain the cell nucleus (blue).

HTRA1 is a member of the trypsin family of serine proteases. This protein is a secreted enzyme that is proposed to regulate the availability of insulin-like growth factors (IGFs) by cleaving IGF-binding proteins. It has also been suggested to be a regulator of cell growth.

Target: Serine Protease HTRA1 (HTRA1)

Clonality: Polyclonal

Datasheet

Version: 5.0.0
Revision date: 13 Aug 2025



Reactivity:	Human, Mouse
Tested Applications:	ELISA, WB, IHC, IF/ICC
Host:	Rabbit
Recommended dilutions:	WB: 1/2000, IHC-P: 1/10 - 1/50, IF/ICC: 1/10 - 1/50. Not tested in IHC-F. Optimal dilutions/concentrations should be determined by the end user.
Conjugation:	Unconjugated
Immunogen:	KLH-conjugated synthetic peptide between 116-147 amino acids from the N-terminal region of human HtrA1.
Isotype:	IgG
Form:	Liquid
Purification:	Purified by saturated ammonium sulfate (SAS) precipitation followed by dialysis against PBS.
Storage:	Aliquot and store at -20°C. Avoid repeated freeze/thaw cycles.
UniProt Primary AC:	Q92743 (UniProt , ExPASy)
NCBI Accession:	NP_002766.1
KEGG:	hsa:5654
String:	9606.ENSP00000357980
Molecular Weight:	Calculated MW: 51.3 kDa
Buffer:	PBS containing 0.09% sodium azide.
Note:	THIS PRODUCT IS FOR RESEARCH USE ONLY. NOT FOR USE IN DIAGNOSTIC, THERAPEUTIC OR COSMETIC PROCEDURES. NOT FOR HUMAN OR ANIMAL CONSUMPTION.