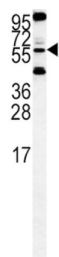
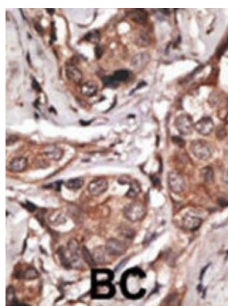


## Serine Protease HTRA1 (HTRA1) Antibody

Catalogue No.: abx027341



WB analysis of HeLa cell line lysates.



IHC-P analysis of human breast carcinoma tissue, with DAB staining.

HTRA1 is a member of the trypsin family of serine proteases. This protein is a secreted enzyme that is proposed to regulate the availability of insulin-like growth factors (IGFs) by cleaving IGF-binding proteins. It has also been suggested to be a regulator of cell growth.

**Target:** Serine Protease HTRA1 (HTRA1)**Clonality:** Polyclonal**Reactivity:** Human**Tested Applications:** ELISA, WB, IHC**Host:** Rabbit**Recommended dilutions:** WB: 1/1000, IHC-P: 1/50 - 1/100. Not tested in IHC-F. Optimal dilutions/concentrations should be determined by the end user.**Conjugation:** Unconjugated**Immunogen:** KLH-conjugated synthetic peptide between 381-412 amino acids from the C-terminal region of human HtrA1.**Isotype:** IgG**Form:** Liquid

# Datasheet

Version: 5.0.0  
Revision date: 30 Jul 2025



<b>Purification:</b>	Purified by saturated ammonium sulfate (SAS) precipitation followed by dialysis against PBS.
<b>Storage:</b>	Aliquot and store at -20°C. Avoid repeated freeze/thaw cycles.
<b>UniProt Primary AC:</b>	Q92743 ( <a href="#">UniProt</a> , <a href="#">ExPASy</a> )
<b>Gene Symbol:</b>	HTRA1
<b>GeneID:</b>	<a href="#">5654</a>
<b>NCBI Accession:</b>	NP_002766.1
<b>KEGG:</b>	hsa:5654
<b>String:</b>	<a href="#">9606.ENSP00000357980</a>
<b>Molecular Weight:</b>	Calculated MW: 51.3 kDa
<b>Buffer:</b>	PBS containing 0.09% sodium azide.
<b>Specificity:</b>	Predicted to react with Rat HTRA1.
<b>Note:</b>	THIS PRODUCT IS FOR RESEARCH USE ONLY. NOT FOR USE IN DIAGNOSTIC, THERAPEUTIC OR COSMETIC PROCEDURES. NOT FOR HUMAN OR ANIMAL CONSUMPTION.