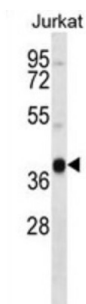


## Membrane Associated Ring-CH-Type Finger 4 (MARCHF4) Antibody

Catalogue No.: abx027350



Membrane Associated Ring-CH-Type Finger 4 (MARCHF4) is a member of the MARCH family of membrane-bound E3 ubiquitin ligases (EC 6.3.2.19). MARCH enzymes add ubiquitin (see MIM 191339) to target lysines in substrate proteins, thereby signaling their vesicular transport between membrane compartments. MARCHF4 reduces surface accumulation of several membrane glycoproteins by directing them to the endosomal compartment (Bartee et al., 2004 [PubMed 14722266]).

<b>Target:</b>	Membrane Associated Ring-CH-Type Finger 4 (MARCHF4)
<b>Clonality:</b>	Polyclonal
<b>Reactivity:</b>	Human
<b>Tested Applications:</b>	ELISA, WB
<b>Host:</b>	Rabbit
<b>Recommended dilutions:</b>	WB: 1/1000. Optimal dilutions/concentrations should be determined by the end user.
<b>Conjugation:</b>	Unconjugated
<b>Immunogen:</b>	KLH-conjugated synthetic peptide between 302-331 amino acids from the C-terminal region of human MARCH4.
<b>Isotype:</b>	IgG
<b>Form:</b>	Liquid
<b>Purification:</b>	Purified through a protein A column, followed by peptide affinity purification.
<b>Storage:</b>	Aliquot and store at -20°C. Avoid repeated freeze/thaw cycles.
<b>UniProt Primary AC:</b>	Q9P2E8 ( <a href="#">UniProt</a> , <a href="#">ExPASy</a> )
<b>String:</b>	<a href="#">9606.ENSP00000273067</a>

# Datasheet

Version: 2.0.0

Revision date: 05 Oct 2025



**Molecular Weight:** Calculated MW: 45.5 kDa

**Buffer:** PBS containing 0.09% sodium azide.

**Note:** THIS PRODUCT IS FOR RESEARCH USE ONLY. NOT FOR USE IN DIAGNOSTIC, THERAPEUTIC OR COSMETIC PROCEDURES. NOT FOR HUMAN OR ANIMAL CONSUMPTION.

For Reference Only