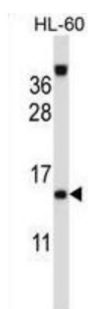
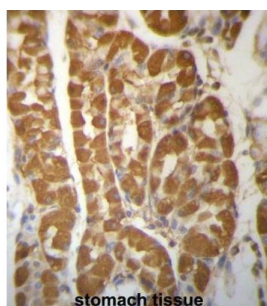


Roadblock Domain-Containing Protein 3 (ROBLD3) Antibody

Catalogue No.: abx027354



The product of this gene is highly conserved with a mouse protein associated with the cytoplasmic face of late endosomes and lysosomes. The mouse protein interacts with MAPK scaffold protein 1, a component of the mitogen-activated protein kinase pathway. In humans, a mutation in this gene has been associated with a primary immunodeficiency syndrome, and suggests a role for this protein in endosomal biogenesis. Multiple transcript variants encoding different isoforms have been found for this gene. [provided by RefSeq].

Target: Roadblock Domain-Containing Protein 3 (ROBLD3)

Clonality: Polyclonal

Reactivity: Human

Tested Applications: ELISA, WB, IHC

Host: Rabbit

Recommended dilutions: WB: 1/1000, IHC-P: 1/10 - 1/50. Not tested in IHC-F. Optimal dilutions/concentrations should be determined by the end user.

Conjugation: Unconjugated

Immunogen: KLH-conjugated synthetic peptide between 41-70 amino acids from the Central region of human ROBLD3.

Isotype: IgG

Datasheet

Version: 4.0.0

Revision date: 30 Jul 2025



Form:	Liquid
Purification:	Purified through a protein A column, followed by peptide affinity purification.
Storage:	Aliquot and store at -20°C. Avoid repeated freeze/thaw cycles.
UniProt Primary AC:	Q9Y2Q5 (UniProt , ExPASy)
Gene Symbol:	ROBLD3
Molecular Weight:	Calculated MW: 13.5 kDa
Buffer:	PBS containing 0.09% sodium azide.
Specificity:	Predicted to react with Cow LAMTOR2.
Note:	THIS PRODUCT IS FOR RESEARCH USE ONLY. NOT FOR USE IN DIAGNOSTIC, THERAPEUTIC OR COSMETIC PROCEDURES. NOT FOR HUMAN OR ANIMAL CONSUMPTION.

For Reference Only