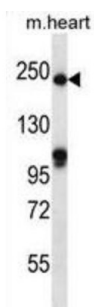
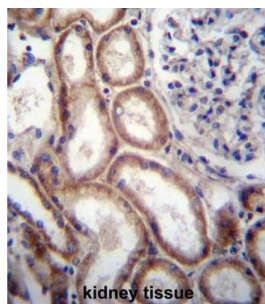


Slit Homolog 1 (SLIT1) Antibody

Catalogue No.: abx027376



Thought to act as molecular guidance cue in cellular migration, and function appears to be mediated by interaction with roundabout homolog receptors. During neural development involved in axonal navigation at the ventral midline of the neural tube and projection of axons to different regions (By similarity). SLIT1 and SLIT2 together seem to be essential for midline guidance in the forebrain by acting as repulsive signal preventing inappropriate midline crossing by axons projecting from the olfactory bulb.

Target: Slit Homolog 1 (SLIT1)

Clonality: Polyclonal

Reactivity: Mouse

Tested Applications: ELISA, WB, IHC

Host: Rabbit

Recommended dilutions: WB: 1/1000, IHC-P: 1/10 - 1/50. Not tested in IHC-F. Optimal dilutions/concentrations should be determined by the end user.

Conjugation: Unconjugated

Immunogen: KLH-conjugated synthetic peptide between 84-113 amino acids from the N-terminal region of human SLIT1.

Isotype: IgG

Datasheet

Version: 4.0.0

Revision date: 08 Sep 2025



Form:	Liquid
Purification:	Purified through a protein A column, followed by peptide affinity purification.
Storage:	Aliquot and store at -20°C. Avoid repeated freeze/thaw cycles.
UniProt Primary AC:	O75093 (UniProt , ExPASy)
Gene Symbol:	SLIT1
KEGG:	hsa:6585
String:	9606.ENSP00000266058
Molecular Weight:	Calculated MW: 168 kDa
Buffer:	PBS containing 0.09% sodium azide.
Specificity:	Predicted to react with Rat SLIT1.
Note:	THIS PRODUCT IS FOR RESEARCH USE ONLY. NOT FOR USE IN DIAGNOSTIC, THERAPEUTIC OR COSMETIC PROCEDURES. NOT FOR HUMAN OR ANIMAL CONSUMPTION.

For Reference Only