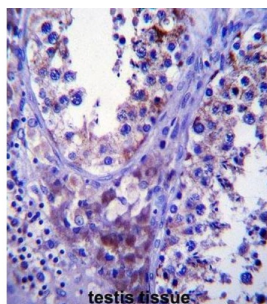


Stromal Cell Derived Factor 2 Like Protein 1 (SDF2L1) Antibody

Catalogue No.: abx027414



The specific function of the protein remains unknown.

Target: Stromal Cell Derived Factor 2 Like Protein 1 (SDF2L1)

Clonality: Polyclonal

Reactivity: Human, Mouse

Tested Applications: ELISA, WB, IHC, FCM

Host: Rabbit

Recommended dilutions: WB: 1/1000, IHC-P: 1/10 - 1/50, FCM: 1/10 - 1/50. Not tested in IHC-F. Optimal dilutions/concentrations should be determined by the end user.

Conjugation: Unconjugated

Datasheet

Version: 2.0.0
Revision date: 17 Sep 2025



Immunogen:	KLH-conjugated synthetic peptide between 160-189 amino acids from the C-terminal region of human SDF2L1.
Isotype:	IgG
Form:	Liquid
Purification:	Purified through a protein A column, followed by peptide affinity purification.
Storage:	Aliquot and store at -20°C. Avoid repeated freeze/thaw cycles.
UniProt Primary AC:	Q9HCN8 (UniProt , ExPASy)
Gene Symbol:	SDF2L1
String:	9606.ENSP00000248958
Molecular Weight:	Calculated MW: 23.6 kDa
Buffer:	PBS containing 0.09% sodium azide.
Specificity:	Predicted to react with Cow SDF2L1.
Note:	THIS PRODUCT IS FOR RESEARCH USE ONLY. NOT FOR USE IN DIAGNOSTIC, THERAPEUTIC OR COSMETIC PROCEDURES. NOT FOR HUMAN OR ANIMAL CONSUMPTION.