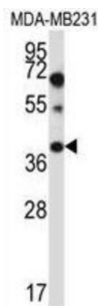
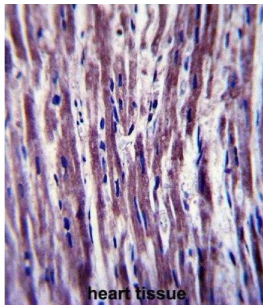


Protein Tyrosine Phosphatase Like Protein A (PTPLA) Antibody

Catalogue No.: abx027419



The protein encoded by this gene contains a characteristic catalytic motif of the protein tyrosine phosphatases (PTPs) family. The PTP motif of this protein has the highly conserved arginine residue replaced by a proline residue; thus it may represent a distinct class of PTPs. Members of the PTP family are known to be signaling molecules that regulate a variety of cellular processes. This gene was preferentially expressed in both adult and fetal heart. A much lower expression level was detected in skeletal and smooth muscle tissues, and no expression was observed in other tissues. The tissue specific expression in the developing and adult heart suggests a role in regulating cardiac development and differentiation.

Target: Protein Tyrosine Phosphatase Like Protein A (PTPLA)

Clonality: Polyclonal

Reactivity: Human

Tested Applications: ELISA, WB, IHC

Host: Rabbit

Recommended dilutions: WB: 1/1000, IHC-P: 1/10 - 1/50. Not tested in IHC-F. Optimal dilutions/concentrations should be determined by the end user.

Conjugation: Unconjugated

Immunogen: KLH-conjugated synthetic peptide between 37-66 amino acids from the N-terminal region of human PTPLA.

Isotype: IgG

Datasheet

Version: 2.0.0

Revision date: 16 Aug 2025



Form:	Liquid
Purification:	Purified through a protein A column, followed by peptide affinity purification.
Storage:	Aliquot and store at -20°C. Avoid repeated freeze/thaw cycles.
UniProt Primary AC:	B0YJ81 (UniProt , ExPASy)
Gene Symbol:	HACD1
KEGG:	hsa:9200
String:	9606.ENSP00000355308
Molecular Weight:	Calculated MW: 32.4 kDa
Buffer:	PBS containing 0.09% sodium azide.
Note:	THIS PRODUCT IS FOR RESEARCH USE ONLY. NOT FOR USE IN DIAGNOSTIC, THERAPEUTIC OR COSMETIC PROCEDURES. NOT FOR HUMAN OR ANIMAL CONSUMPTION.

For Reference Only