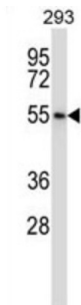


RNA Polymerase III Subunit D (POLR3D) Antibody

Catalogue No.: abx027427



This gene complements a temperature-sensitive mutant isolated from the BHK-21 Syrian hamster cell line. It leads to a block in progression through the G1 phase of the cell cycle at nonpermissive temperatures.

Target:	RNA Polymerase III Subunit D (POLR3D)
Clonality:	Polyclonal
Reactivity:	Human
Tested Applications:	ELISA, WB
Host:	Rabbit
Recommended dilutions:	WB: 1/1000. Optimal dilutions/concentrations should be determined by the end user.
Conjugation:	Unconjugated
Immunogen:	KLH-conjugated synthetic peptide between 127-156 amino acids from the Central region of human POLR3D.
Isotype:	IgG
Form:	Liquid
Purification:	Purified through a protein A column, followed by peptide affinity purification.
Storage:	Aliquot and store at -20°C. Avoid repeated freeze/thaw cycles.
UniProt Primary AC:	P05423 (UniProt , ExPASy)
KEGG:	hsa:661

Datasheet

Version: 2.0.0

Revision date: 18 Mar 2025



String: [9606.ENSF00000380904](#)

Molecular Weight: Calculated MW: 44.4 kDa

Buffer: PBS containing 0.09% sodium azide.

Specificity: Predicted to react with Mouse and Cow POLR3D.

Note: THIS PRODUCT IS FOR RESEARCH USE ONLY. NOT FOR USE IN DIAGNOSTIC, THERAPEUTIC OR COSMETIC PROCEDURES. NOT FOR HUMAN OR ANIMAL CONSUMPTION.

For Reference Only