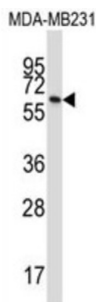


Butyrophilin Subfamily 3 Member A1 (BTN3A1) Antibody

Catalogue No.: abx027428



The butyrophilin (BTN) genes are a group of major histocompatibility complex (MHC) associated genes that encode type I membrane proteins with 2 extracellular immunoglobulin (Ig) domains and an intracellular B30.2 (PRYSPRY) domain. Three subfamilies of human BTN genes are located in the MHC class I region: the single-copy *BTN1A1* gene (MIM 601610) and the *BTN2* (e.g., *BTN2A1*; MIM 613590) and *BTN3* (e.g., *BTN3A1*) genes, which have undergone tandem duplication, resulting in 3 copies of each (summary by Smith et al., 2010 [PubMed 20208008]). [supplied by OMIM].

Target:	Butyrophilin Subfamily 3 Member A1 (BTN3A1)
Clonality:	Polyclonal
Reactivity:	Human
Tested Applications:	ELISA, WB
Host:	Rabbit
Recommended dilutions:	WB: 1/1000. Optimal dilutions/concentrations should be determined by the end user.
Conjugation:	Unconjugated
Immunogen:	KLH-conjugated synthetic peptide between 345-374 amino acids from the C-terminal region of human BTN3A1.
Isotype:	IgG
Form:	Liquid
Purification:	Purified through a protein A column, followed by peptide affinity purification.
Storage:	Aliquot and store at -20°C. Avoid repeated freeze/thaw cycles.
UniProt Primary AC:	O00481 (UniProt , ExPASy)

Datasheet

Version: 2.0.0

Revision date: 05 Oct 2025



Gene Symbol: BTN3A1

KEGG: hsa:11119

String: [9606.ENSP00000289361](#)

Molecular Weight: Calculated MW: 57.7 kDa

Buffer: PBS containing 0.09% sodium azide.

Note: THIS PRODUCT IS FOR RESEARCH USE ONLY. NOT FOR USE IN DIAGNOSTIC, THERAPEUTIC OR COSMETIC PROCEDURES. NOT FOR HUMAN OR ANIMAL CONSUMPTION.

For Reference Only