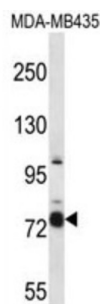


Cas Scaffolding Protein Family Member 4 (CASS4) Antibody

Catalogue No.: abx027436



Possible docking protein which may play a role for tyrosine-kinase-based signaling related to cell adhesion. Regulates FAK activity, focal adhesion integrity, and cell spreading.

Target:	Cas Scaffolding Protein Family Member 4 (CASS4)
Clonality:	Polyclonal
Reactivity:	Human
Tested Applications:	ELISA, WB
Host:	Rabbit
Recommended dilutions:	WB: 1/1000. Optimal dilutions/concentrations should be determined by the end user.
Conjugation:	Unconjugated
Immunogen:	KLH-conjugated synthetic peptide between 610-639 amino acids from the C-terminal region of human CASS4.
Isotype:	IgG
Form:	Liquid
Purification:	Purified through a protein A column, followed by peptide affinity purification.
Storage:	Aliquot and store at -20°C. Avoid repeated freeze/thaw cycles.
UniProt Primary AC:	Q9NQ75 (UniProt , ExPASy)
Gene Symbol:	CASS4

Datasheet

Version: 3.0.0

Revision date: 07 Jun 2025



String: [9606.ENSF00000353462](#)

Molecular Weight: Calculated MW: 87.1 kDa

Buffer: PBS containing 0.09% sodium azide.

Note: THIS PRODUCT IS FOR RESEARCH USE ONLY. NOT FOR USE IN DIAGNOSTIC, THERAPEUTIC OR COSMETIC PROCEDURES. NOT FOR HUMAN OR ANIMAL CONSUMPTION.

For Reference Only