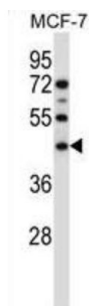
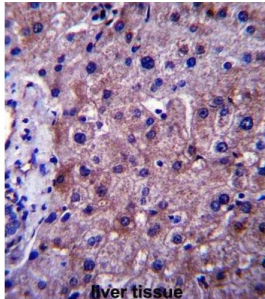


Phosphatidylcholine:ceramide Cholinephosphotransferase 1 (SGMS1) Antibody

Catalogue No.: abx027470



The protein encoded by this gene is predicted to be a five-pass transmembrane protein. This gene may be predominately expressed in brain.

Target: Phosphatidylcholine:ceramide Cholinephosphotransferase 1 (SGMS1)

Clonality: Polyclonal

Reactivity: Human

Tested Applications: ELISA, WB, IHC

Host: Rabbit

Recommended dilutions: WB: 1/1000, IHC-P: 1/10 - 1/50. Not tested in IHC-F. Optimal dilutions/concentrations should be determined by the end user.

Conjugation: Unconjugated

Immunogen: KLH-conjugated synthetic peptide between 24-53 amino acids from the N-terminal region of human SGMS1.

Isotype: IgG

Form: Liquid

Datasheet

Version: 2.0.0
Revision date: 02 Jun 2025



Purification:	Purified through a protein A column, followed by peptide affinity purification.
Storage:	Aliquot and store at -20°C. Avoid repeated freeze/thaw cycles.
UniProt Primary AC:	Q86VZ5 (UniProt , ExPASy)
Gene Symbol:	SGMS1
KEGG:	hsa:259230
String:	9606.ENSP00000354829
Molecular Weight:	Calculated MW: 48.6 kDa
Buffer:	PBS containing 0.09% sodium azide.
Specificity:	Predicted to react with Mouse SGMS1.
Note:	THIS PRODUCT IS FOR RESEARCH USE ONLY. NOT FOR USE IN DIAGNOSTIC, THERAPEUTIC OR COSMETIC PROCEDURES. NOT FOR HUMAN OR ANIMAL CONSUMPTION.

For Reference Only