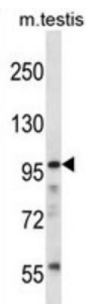


SURP And G-Patch Domain Containing 2 (SFRS14) Antibody

Catalogue No.: abx027482



This gene encodes a member of the arginine/serine-rich family of splicing factors. The encoded protein functions in mRNA processing. Alternatively spliced transcript variants have been described.

Target:	SURP And G-Patch Domain Containing 2 (SFRS14)
Clonality:	Polyclonal
Reactivity:	Mouse
Tested Applications:	ELISA, WB
Host:	Rabbit
Recommended dilutions:	WB: 1/1000. Optimal dilutions/concentrations should be determined by the end user.
Conjugation:	Unconjugated
Immunogen:	KLH-conjugated synthetic peptide between 1010-1039 amino acids from the C-terminal region of human SFRS14.
Isotype:	IgG
Form:	Liquid
Purification:	Purified through a protein A column, followed by peptide affinity purification.
Storage:	Aliquot and store at -20°C. Avoid repeated freeze/thaw cycles.
UniProt Primary AC:	Q8IX01 (UniProt , ExPASy)
Gene Symbol:	SUGP2

Datasheet

Version: 3.0.0

Revision date: 02 May 2025



KEGG: hsa:10147

String: [9606.ENSP00000472286](#)

Molecular Weight: Calculated MW: 120 kDa

Buffer: PBS containing 0.09% sodium azide.

Note: THIS PRODUCT IS FOR RESEARCH USE ONLY. NOT FOR USE IN DIAGNOSTIC, THERAPEUTIC OR COSMETIC PROCEDURES. NOT FOR HUMAN OR ANIMAL CONSUMPTION.

For Reference Only