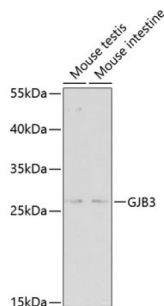


Gap Junction Beta-3 Protein / CX31 (GJB3) Antibody

Catalogue No.: abx002149



Western blot analysis of various lysates using GJB3 Antibody at 1/500 dilution. Secondary antibody: HRP-conjugated Goat anti-Rabbit IgG (H+L) at 1/10000 dilution. Lysates/proteins: 25 µg per lane. Blocking buffer: 3% nonfat dry milk in TBST.

Gap Junction Beta-3 Protein / CX31 (GJB3) Antibody is a Rabbit Polyclonal antibody against GJB3. This gene is a member of the connexin gene family. The encoded protein is a component of gap junctions, which are composed of arrays of intercellular channels that provide a route for the diffusion of low molecular weight materials from cell to cell. Mutations in this gene can cause non-syndromic deafness or erythrokeratoderma variabilis, a skin disorder. Alternative splicing results in multiple transcript variants encoding the same protein.

Target:	Gap Junction Beta-3 Protein / CX31 (GJB3)
Clonality:	Polyclonal
Reactivity:	Human, Mouse, Rat
Tested Applications:	ELISA, WB
Host:	Rabbit
Recommended dilutions:	ELISA: 1 µg/ml, WB: 1/2000 - 1/50000. Optimal dilutions/concentrations should be determined by the end user.
Conjugation:	Unconjugated
Immunogen:	A synthetic peptide corresponding to a sequence within amino acids 100-200 of human GJB3.
Isotype:	IgG
Form:	Liquid
Purification:	Purified by affinity chromatography.
Storage:	Aliquot and store at -20°C. Avoid repeated freeze/thaw cycles.
UniProt Primary AC:	O75712 (UniProt , ExPASy)

Datasheet

Version: 4.0.0

Revision date: 01 Jul 2025



Gene Symbol: GJB3

GeneID: [2707](#)

NCBI Accession: NP_076872.1

KEGG: hsa:2707

String: [9606.ENSP00000362464](#)

Molecular Weight: Calculated MW: 31 kDa
Observed MW: 31 kDa

Buffer: PBS, pH 7.3, containing 0.09% sodium azide, 50% glycerol.

Concentration: > 0.2 mg/ml

Note: THIS PRODUCT IS FOR RESEARCH USE ONLY. NOT FOR USE IN DIAGNOSTIC, THERAPEUTIC OR COSMETIC PROCEDURES. NOT FOR HUMAN OR ANIMAL CONSUMPTION.

For Reference Only