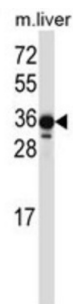


LIMS2 Antibody

Catalogue No.: abx027491



LIMS2 is a focal adhesion protein that associates with integrin-linked kinase (ILK; MIM 602366), a multidomain protein that mediates multiple protein-protein interactions at adhesion sites between cells and the extracellular matrix (ECM). [supplied by OMIM].

Target: LIMS2

Clonality: Polyclonal

Reactivity: Mouse

Tested Applications: ELISA, WB

Host: Rabbit

Recommended dilutions: WB: 1/1000. Optimal dilutions/concentrations should be determined by the end user.

Conjugation: Unconjugated

Immunogen: KLH-conjugated synthetic peptide between 309-337 amino acids from the C-terminal region of human LIMS2.

Isotype: IgG

Form: Liquid

Purification: Purified through a protein A column, followed by peptide affinity purification.

Storage: Aliquot and store at -20°C. Avoid repeated freeze/thaw cycles.

UniProt Primary AC: Q7Z4I7 ([UniProt](#), [ExPASy](#))

Gene Symbol: LIMS2

Datasheet

Version: 3.0.0

Revision date: 13 Jun 2025



KEGG: hsa:55679

String: [9606.ENSP00000326888](#)

Molecular Weight: Calculated MW: 38.9 kDa

Buffer: PBS containing 0.09% sodium azide.

Note: THIS PRODUCT IS FOR RESEARCH USE ONLY. NOT FOR USE IN DIAGNOSTIC, THERAPEUTIC OR COSMETIC PROCEDURES. NOT FOR HUMAN OR ANIMAL CONSUMPTION.

For Reference Only