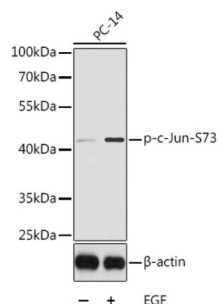
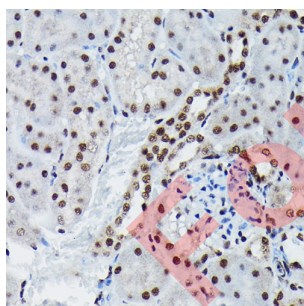
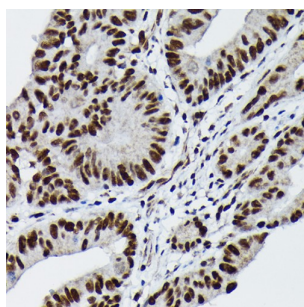
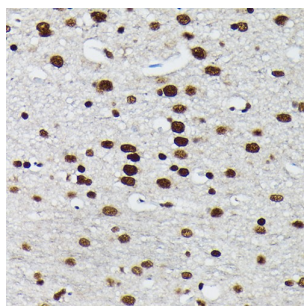


## JUN (pS73) Antibody

Catalogue No.: abx000171



Western blot analysis of lysates from PC14 cells using Phospho-c-Jun-S73 Antibody. Secondary antibody: HRP-conjugated Goat anti-Rabbit IgG (H+L) at 1/10000 dilution. Lysates/proteins: 25 µg per lane. Blocking buffer: 3% BSA.



JUN (pS73) Antibody is a Rabbit Polyclonal antibody against JUN (pS73). This gene is the putative transforming gene of avian sarcoma virus 17. It encodes a protein which is highly similar to the viral protein, and which interacts directly with specific target DNA sequences to regulate gene expression. This gene is intronless and is mapped to 1p32-p31, a chromosomal region involved in both translocations and deletions in human malignancies.

**Target:** JUN (pS73)

**Clonality:** Polyclonal

# Datasheet

Version: 4.0.0  
Revision date: 10 Oct 2025



<b>Reactivity:</b>	Human, Mouse, Rat
<b>Tested Applications:</b>	ELISA, WB, IHC
<b>Host:</b>	Rabbit
<b>Recommended dilutions:</b>	ELISA: 1 µg/ml, WB: 1/500 - 1/1000, IHC-P: 1/50 - 1/200. Not tested in IHC-F. Optimal dilutions/concentrations should be determined by the end user.
<b>Conjugation:</b>	Unconjugated
<b>Immunogen:</b>	A synthetic phosphorylated peptide around S73 of human c-JUN.
<b>Isotype:</b>	IgG
<b>Form:</b>	Liquid
<b>Purification:</b>	Purified by affinity chromatography.
<b>Storage:</b>	Aliquot and store at -20°C. Avoid repeated freeze/thaw cycles.
<b>UniProt Primary AC:</b>	P05412 ( <a href="#">UniProt</a> , <a href="#">ExPASy</a> )
<b>Gene Symbol:</b>	JUN
<b>GeneID:</b>	<a href="#">3725</a>
<b>NCBI Accession:</b>	NP_002219.1
<b>KEGG:</b>	hsa:3725
<b>String:</b>	<a href="#">9606.ENSP00000360266</a>
<b>Molecular Weight:</b>	Calculated MW: 36 kDa Observed MW: 42 kDa
<b>Buffer:</b>	PBS, pH 7.3, containing 0.01% thimerosal, 50% glycerol.
<b>Concentration:</b>	> 0.2 mg/ml
<b>Note:</b>	THIS PRODUCT IS FOR RESEARCH USE ONLY. NOT FOR USE IN DIAGNOSTIC, THERAPEUTIC OR COSMETIC PROCEDURES. NOT FOR HUMAN OR ANIMAL CONSUMPTION.