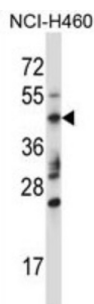


Tripartite Motif-Containing Protein 15 (TRIM15) Antibody

Catalogue No.: abx027514



The protein encoded by this gene is a member of the tripartite motif (TRIM) family. The TRIM motif includes three zinc-binding domains, a RING, a B-box type 1 and a B-box type 2, and a coiled-coil region. The protein localizes to the cytoplasm. Alternatively spliced transcript variants have been described, but their biological validity has not been determined. [provided by RefSeq].

Target:	Tripartite Motif-Containing Protein 15 (TRIM15)
Clonality:	Polyclonal
Reactivity:	Human
Tested Applications:	ELISA, WB
Host:	Rabbit
Recommended dilutions:	WB: 1/1000. Optimal dilutions/concentrations should be determined by the end user.
Conjugation:	Unconjugated
Immunogen:	KLH-conjugated synthetic peptide between 247-276 amino acids from the Central region of human TRIM15.
Isotype:	IgG
Form:	Liquid
Purification:	Purified through a protein A column, followed by peptide affinity purification.
Storage:	Aliquot and store at -20°C. Avoid repeated freeze/thaw cycles.
UniProt Primary AC:	Q9C019 (UniProt , ExPASy)
Gene Symbol:	TRIM15

Datasheet

Version: 2.0.0

Revision date: 08 Sep 2025



String: [9606.ENSF00000365884](#)

Molecular Weight: Calculated MW: 52.1 kDa

Buffer: PBS containing 0.09% sodium azide.

Note: THIS PRODUCT IS FOR RESEARCH USE ONLY. NOT FOR USE IN DIAGNOSTIC, THERAPEUTIC OR COSMETIC PROCEDURES. NOT FOR HUMAN OR ANIMAL CONSUMPTION.

For Reference Only