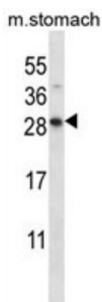


Dolichyldiphosphatase 1 (DOLPP1) Antibody

Catalogue No.: abx027522



DOLPP1 is required for efficient N-glycosylation. Necessary for maintaining optimal levels of dolichol-linked oligosaccharides. Hydrolyzes dolichyl pyrophosphate at a very high rate and dolichyl monophosphate at a much lower rate. Does not act on phosphatidate (By similarity).

Target: Dolichyldiphosphatase 1 (DOLPP1)

Clonality: Polyclonal

Reactivity: Mouse

Tested Applications: ELISA, WB

Host: Rabbit

Recommended dilutions: WB: 1/1000. Optimal dilutions/concentrations should be determined by the end user.

Conjugation: Unconjugated

Immunogen: KLH-conjugated synthetic peptide between 207-236 amino acids from the C-terminal region of human DOLPP1.

Isotype: IgG

Form: Liquid

Purification: Purified through a protein A column, followed by peptide affinity purification.

Storage: Aliquot and store at -20°C. Avoid repeated freeze/thaw cycles.

UniProt Primary AC: Q86YN1 ([UniProt](#), [ExPASy](#))

Gene Symbol: DOLPP1

Datasheet

Version: 3.0.0

Revision date: 13 Aug 2025



KEGG: hsa:57171

String: [9606.ENSP00000361625](#)

Molecular Weight: Calculated MW: 27 kDa

Buffer: PBS containing 0.09% sodium azide.

Note: THIS PRODUCT IS FOR RESEARCH USE ONLY. NOT FOR USE IN DIAGNOSTIC, THERAPEUTIC OR COSMETIC PROCEDURES. NOT FOR HUMAN OR ANIMAL CONSUMPTION.

For Reference Only