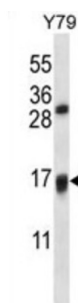


# Vitamin K Epoxide Reductase Complex Subunit 1-Like Protein 1 (VKORC1L1) Antibody

Catalogue No.: abx027528



The function of this protein remains unknown.

<b>Target:</b>	Vitamin K Epoxide Reductase Complex Subunit 1-Like Protein 1 (VKORC1L1)
<b>Clonality:</b>	Polyclonal
<b>Reactivity:</b>	Human, Mouse, Rat
<b>Tested Applications:</b>	ELISA, WB
<b>Host:</b>	Rabbit
<b>Recommended dilutions:</b>	WB: 1/2000. Optimal dilutions/concentrations should be determined by the end user.
<b>Conjugation:</b>	Unconjugated
<b>Immunogen:</b>	KLH-conjugated synthetic peptide between 19-47 amino acids from the N-terminal region of human VKORC1L1.
<b>Isotype:</b>	IgG
<b>Form:</b>	Liquid
<b>Purification:</b>	Purified through a protein A column, followed by peptide affinity purification.
<b>Storage:</b>	Aliquot and store at -20°C. Avoid repeated freeze/thaw cycles.
<b>UniProt Primary AC:</b>	Q8N0U8 ( <a href="#">UniProt</a> , <a href="#">ExPASy</a> )
<b>Gene Symbol:</b>	VKORC1L1

# Datasheet

Version: 3.0.0

Revision date: 12 Sep 2025



**KEGG:** hsa:154807

**Molecular Weight:** Calculated MW: 19.8 kDa

**Buffer:** PBS containing 0.09% sodium azide.

**Specificity:** Predicted to react with Mouse and Rat VKORC1L1.

**Note:** THIS PRODUCT IS FOR RESEARCH USE ONLY. NOT FOR USE IN DIAGNOSTIC, THERAPEUTIC OR COSMETIC PROCEDURES. NOT FOR HUMAN OR ANIMAL CONSUMPTION.

For Reference Only