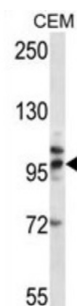


## Toll Like Receptor 2 (TLR2) Antibody

Catalogue No.: abx027542



The protein encoded by this gene is a member of the Toll-like receptor (TLR) family which plays a fundamental role in pathogen recognition and activation of innate immunity. TLRs are highly conserved from *Drosophila* to humans and share structural and functional similarities. They recognize pathogen-associated molecular patterns (PAMPs) that are expressed on infectious agents, and mediate the production of cytokines necessary for the development of effective immunity. The various TLRs exhibit different patterns of expression. This gene is expressed most abundantly in peripheral blood leukocytes, and mediates host response to Gram-positive bacteria and yeast via stimulation of NF-kappaB.

**Target:** Toll Like Receptor 2 (TLR2)

**Clonality:** Polyclonal

**Reactivity:** Human

**Tested Applications:** ELISA, WB

**Host:** Rabbit

**Recommended dilutions:** WB: 1/1000. Optimal dilutions/concentrations should be determined by the end user.

**Conjugation:** Unconjugated

**Immunogen:** KLH-conjugated synthetic peptide between 281-310 amino acids from the Central region of human TLR2.

**Isotype:** IgG

**Form:** Liquid

**Purification:** Purified through a protein A column, followed by peptide affinity purification.

**Storage:** Aliquot and store at -20°C. Avoid repeated freeze/thaw cycles.

**UniProt Primary AC:** O60603 ([UniProt](#), [ExPASy](#))

# Datasheet

Version: 2.0.0

Revision date: 13 Sep 2025



Gene Symbol:	TLR2
GeneID:	<a href="#">7097</a>
OMIM:	<a href="#">246300</a>
NCBI Accession:	NP_003255.2
HGNC:	11848
KEGG:	hsa:7097
Ensembl:	ENSG00000137462
String:	<a href="#">9606.ENSP00000260010</a>
Molecular Weight:	Calculated MW: 89.8 kDa
Buffer:	PBS containing 0.09% sodium azide.
Note:	THIS PRODUCT IS FOR RESEARCH USE ONLY. NOT FOR USE IN DIAGNOSTIC, THERAPEUTIC OR COSMETIC PROCEDURES. NOT FOR HUMAN OR ANIMAL CONSUMPTION.

For Reference Only