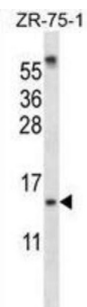
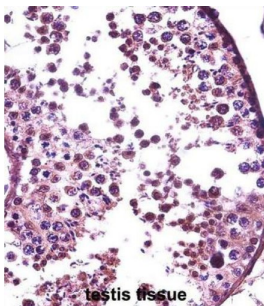
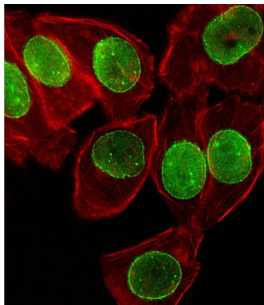


Small Ubiquitin Related Modifier Protein 1 (SUMO1) Antibody

Catalogue No.: abx027553



This gene encodes a protein that is a member of the SUMO (small ubiquitin-like modifier) protein family. It functions in a manner similar to ubiquitin in that it is bound to target proteins as part of a post-translational modification system. However, unlike ubiquitin which targets proteins for degradation, this protein is involved in a variety of cellular processes, such as nuclear transport, transcriptional regulation, apoptosis, and protein stability. It is not active until the last four amino acids of the carboxy-terminus have been cleaved off. Several pseudogenes have been reported for this gene. Alternate transcriptional splice variants encoding different isoforms have been characterized.

Target: Small Ubiquitin Related Modifier Protein 1 (SUMO1)

Clonality: Polyclonal

Reactivity: Human

Tested Applications: ELISA, WB, IHC, IF/ICC

Host: Rabbit

Datasheet

Version: 2.0.0
Revision date: 11 Sep 2025



Recommended dilutions: WB: 1/1000, IHC-P: 1/10 - 1/50, IF/ICC: 1/10 - 1/50. Not tested in IHC-F. Optimal dilutions/concentrations should be determined by the end user.

Conjugation: Unconjugated

Immunogen: KLH-conjugated synthetic peptide between 1-30 amino acids from the N-terminal region of human SUMO1.

Isotype: IgG

Form: Liquid

Purification: Purified through a protein A column, followed by peptide affinity purification.

Storage: Aliquot and store at -20°C. Avoid repeated freeze/thaw cycles.

UniProt Primary AC: P63165 ([UniProt](#), [ExPASy](#))

KEGG: hsa:7341

String: [9606.ENSP00000376077](#)

Molecular Weight: Calculated MW: 11.6 kDa

Buffer: PBS containing 0.09% sodium azide.

Specificity: Predicted to react with Mouse, Rat, Cow and Pig SUMO1.

Note: THIS PRODUCT IS FOR RESEARCH USE ONLY. NOT FOR USE IN DIAGNOSTIC, THERAPEUTIC OR COSMETIC PROCEDURES. NOT FOR HUMAN OR ANIMAL CONSUMPTION.