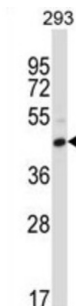


Fc Fragment of IgG, Low Affinity Ilc, Receptor For (CD32) (FCGR2C) Antibody

Catalogue No.: abx027566



Receptor for the Fc region of complexed immunoglobulins gamma. Low affinity receptor. Involved in a variety of effector and regulatory functions such as phagocytosis of immune complexes and modulation of antibody production by B-cells.

Target: Fc Fragment of IgG, Low Affinity Ilc, Receptor For (CD32) (FCGR2C)

Clonality: Polyclonal

Reactivity: Human

Tested Applications: ELISA, WB

Host: Rabbit

Recommended dilutions: WB: 1/1000. Optimal dilutions/concentrations should be determined by the end user.

Conjugation: Unconjugated

Immunogen: KLH-conjugated synthetic peptide between 260-288 amino acids from the C-terminal region of human FCGR2C.

Isotype: IgG

Form: Liquid

Purification: Purified through a protein A column, followed by peptide affinity purification.

Storage: Aliquot and store at -20°C. Avoid repeated freeze/thaw cycles.

UniProt Primary AC: P31995 ([UniProt](#), [ExPASy](#))

Gene Symbol: FCGR2C

Datasheet

Version: 2.0.0

Revision date: 12 Mar 2025



KEGG: hsa:9103

Molecular Weight: Calculated MW: 35.6 kDa

Buffer: PBS containing 0.09% sodium azide.

Note: THIS PRODUCT IS FOR RESEARCH USE ONLY. NOT FOR USE IN DIAGNOSTIC, THERAPEUTIC OR COSMETIC PROCEDURES. NOT FOR HUMAN OR ANIMAL CONSUMPTION.

For Reference Only