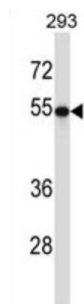


Tubulin Beta 2A (TUBB2A) Antibody

Catalogue No.: abx027572



Tubulin is the major constituent of microtubules. It binds two moles of GTP, one at an exchangeable site on the beta chain and one at a non-exchangeable site on the alpha-chain (By similarity).

Target: Tubulin Beta 2A (TUBB2A)

Clonality: Polyclonal

Reactivity: Human

Tested Applications: ELISA, WB

Host: Rabbit

Recommended dilutions: WB: 1/1000. Optimal dilutions/concentrations should be determined by the end user.

Conjugation: Unconjugated

Immunogen: KLH-conjugated synthetic peptide between 410-438 amino acids from the C-terminal region of human TUBB2A.

Isotype: IgG

Form: Liquid

Purification: Purified through a protein A column, followed by peptide affinity purification.

Storage: Aliquot and store at -20°C. Avoid repeated freeze/thaw cycles.

UniProt Primary AC: Q13885 ([UniProt](#), [ExPASy](#))

KEGG: hsa:7280

Datasheet

Version: 2.0.0

Revision date: 29 Aug 2025



String: [9606.ENSF00000369703](#)

Molecular Weight: Calculated MW: 49.9 kDa

Buffer: PBS containing 0.09% sodium azide.

Specificity: Predicted to react with Mouse, Rat, Cow, Pig, Chicken, Monkey and Xenopus TUBB2A.

Note: THIS PRODUCT IS FOR RESEARCH USE ONLY. NOT FOR USE IN DIAGNOSTIC, THERAPEUTIC OR COSMETIC PROCEDURES. NOT FOR HUMAN OR ANIMAL CONSUMPTION.

For Reference Only