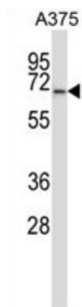


Protein Phosphatase 3 Catalytic Subunit Alpha (PPP3CA) Antibody

Catalogue No.: abx027586



Calcium-dependent, calmodulin-stimulated protein phosphatase. This subunit may have a role in the calmodulin activation of calcineurin. Dephosphorylates DNM1L, HSPB1 and SSH1.

Target:	Protein Phosphatase 3 Catalytic Subunit Alpha (PPP3CA)
Clonality:	Polyclonal
Reactivity:	Human
Tested Applications:	ELISA, WB
Host:	Rabbit
Recommended dilutions:	WB: 1/1000. Optimal dilutions/concentrations should be determined by the end user.
Conjugation:	Unconjugated
Immunogen:	KLH-conjugated synthetic peptide between 438-466 amino acids from the C-terminal region of human PPP3CA.
Isotype:	IgG
Form:	Liquid
Purification:	Purified through a protein A column, followed by peptide affinity purification.
Storage:	Aliquot and store at -20°C. Avoid repeated freeze/thaw cycles.
UniProt Primary AC:	Q08209 (UniProt , ExPASy)
Molecular Weight:	Calculated MW: 58.7 kDa

Datasheet

Version: 5.0.0

Revision date: 01 Oct 2025



Buffer: PBS containing 0.09% sodium azide.

Specificity: Predicted to react with Mouse, Rat and Cow PPP3CA.

Note: THIS PRODUCT IS FOR RESEARCH USE ONLY. NOT FOR USE IN DIAGNOSTIC, THERAPEUTIC OR COSMETIC PROCEDURES. NOT FOR HUMAN OR ANIMAL CONSUMPTION.

For Reference Only