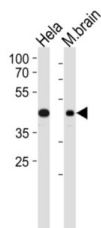
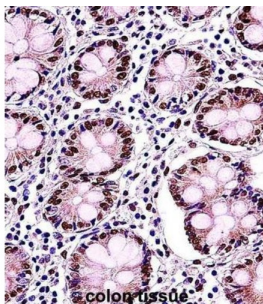
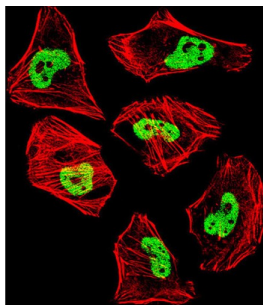


## TAR DNA-Binding Protein 43 / TDP43 (TARDBP) Antibody

Catalogue No.: abx027591



HIV-1, the causative agent of acquired immunodeficiency syndrome (AIDS), contains an RNA genome that produces a chromosomally integrated DNA during the replicative cycle. Activation of HIV-1 gene expression by the transactivator Tat is dependent on an RNA regulatory element (TAR) located downstream of the transcription initiation site. The protein encoded by this gene is a transcriptional repressor that binds to chromosomally integrated TAR DNA and represses HIV-1 transcription. In addition, this protein regulates alternate splicing of the CFTR gene. A similar pseudogene is present on chromosome 20. [provided by RefSeq].

**Target:** TAR DNA-Binding Protein 43 / TDP43 (TARDBP)

**Clonality:** Polyclonal

**Reactivity:** Human, Mouse, Rat

**Tested Applications:** ELISA, WB, IHC, IF/ICC

**Host:** Rabbit

# Datasheet

Version: 2.0.0  
Revision date: 14 Sep 2025



**Recommended dilutions:** WB: 1/2000, IHC-P: 1/100, IF/ICC: 1/10 - 1/50. Not tested in IHC-F. Optimal dilutions/concentrations should be determined by the end user.

**Conjugation:** Unconjugated

**Immunogen:** KLH-conjugated synthetic peptide between 1-30 amino acids from the N-terminal region of human TARDBP.

**Isotype:** IgG

**Form:** Liquid

**Purification:** Purified through a protein A column, followed by peptide affinity purification.

**Storage:** Aliquot and store at -20°C. Avoid repeated freeze/thaw cycles.

**UniProt Primary AC:** Q13148 ([UniProt](#), [ExPASy](#))

**NCBI Accession:** NP\_031401.1

**KEGG:** hsa:23435

**String:** [9606.ENSP00000240185](#)

**Molecular Weight:** Calculated MW: 44.7 kDa

**Buffer:** PBS containing 0.09% sodium azide.

**Specificity:** Predicted to react with Chicken TARDBP.

**Note:** THIS PRODUCT IS FOR RESEARCH USE ONLY. NOT FOR USE IN DIAGNOSTIC, THERAPEUTIC OR COSMETIC PROCEDURES. NOT FOR HUMAN OR ANIMAL CONSUMPTION.