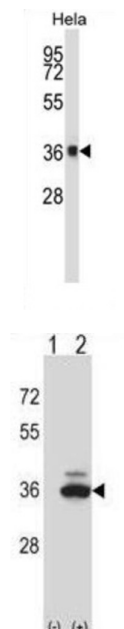


Serine/threonine-Protein Phosphatase PP1-Beta Catalytic Subunit (PPP1CB) Antibody

Catalogue No.: abx027661



The protein encoded by this gene is one of the three catalytic subunits of protein phosphatase 1 (PP1). PP1 is a serine/threonine specific protein phosphatase known to be involved in the regulation of a variety of cellular processes, such as cell division, glycogen metabolism, muscle contractility, protein synthesis, and HIV-1 viral transcription. Mouse studies suggest that PP1 functions as a suppressor of learning and memory. Two alternatively spliced transcript variants encoding distinct isoforms have been observed.

Target: Serine/threonine-Protein Phosphatase PP1-Beta Catalytic Subunit (PPP1CB)

Clonality: Polyclonal

Reactivity: Human

Tested Applications: ELISA, WB

Host: Rabbit

Recommended dilutions: WB: 1/1000. Optimal dilutions/concentrations should be determined by the end user.

Conjugation: Unconjugated

Immunogen: KLH-conjugated synthetic peptide between 298-327 amino acids from the C-terminal region of human PPP1CB.

Isotype: IgG

Datasheet

Version: 3.0.0
Revision date: 13 Aug 2025



Form:	Liquid
Purification:	Purified through a protein A column, followed by peptide affinity purification.
Storage:	Aliquot and store at -20°C. Avoid repeated freeze/thaw cycles.
UniProt Primary AC:	P62140 (UniProt , ExPASy)
KEGG:	hsa:5500
String:	9606.ENSP00000378769
Molecular Weight:	Calculated MW: 37.2 kDa
Buffer:	PBS containing 0.09% sodium azide.
Specificity:	Predicted to react with Mouse, Rat, Cow, Pig, Chicken, Rabbit and Xenopus PPP1CB.
Note:	THIS PRODUCT IS FOR RESEARCH USE ONLY. NOT FOR USE IN DIAGNOSTIC, THERAPEUTIC OR COSMETIC PROCEDURES. NOT FOR HUMAN OR ANIMAL CONSUMPTION.