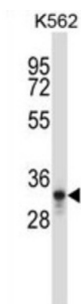


Pancreas Specific Transcription Factor 1a (PTF1A) Antibody

Catalogue No.: abx027663



This gene encodes a protein that is a component of the pancreas transcription factor 1 complex (PTF1) and is known to have a role in mammalian pancreatic development. The protein plays a role in determining whether cells allocated to the pancreatic buds continue towards pancreatic organogenesis or revert back to duodenal fates. The protein is thought to be involved in the maintenance of exocrine pancreas-specific gene expression including elastase 1 and amylase. Mutations in this gene cause cerebellar agenesis and loss of expression is seen in ductal type pancreas cancers.

Target:	Pancreas Specific Transcription Factor 1a (PTF1A)
Clonality:	Polyclonal
Reactivity:	Human
Tested Applications:	ELISA, WB
Host:	Rabbit
Recommended dilutions:	WB: 1/1000. Optimal dilutions/concentrations should be determined by the end user.
Conjugation:	Unconjugated
Immunogen:	KLH-conjugated synthetic peptide between 287-316 amino acids from the C-terminal region of human PTF1A.
Isotype:	IgG
Form:	Liquid
Purification:	Purified through a protein A column, followed by peptide affinity purification.
Storage:	Aliquot and store at -20°C. Avoid repeated freeze/thaw cycles.
UniProt Primary AC:	Q7RTS3 (UniProt , ExPASy)

Datasheet

Version: 2.0.0

Revision date: 20 Aug 2025



Gene Symbol: PTF1A

KEGG: hsa:256297

String: [9606.ENSP00000365687](https://string-db.org/cgi/show.do?query=PTF1A&organism=Homo_sapiens&score=0.5&network=1&color=1&highlight=1&search=1&show=1&view=1)

Molecular Weight: Calculated MW: 35 kDa

Buffer: PBS containing 0.09% sodium azide.

Note: THIS PRODUCT IS FOR RESEARCH USE ONLY. NOT FOR USE IN DIAGNOSTIC, THERAPEUTIC OR COSMETIC PROCEDURES. NOT FOR HUMAN OR ANIMAL CONSUMPTION.

For Reference Only