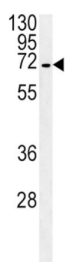
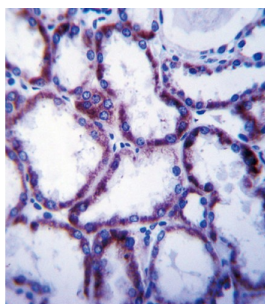


## Solute Carrier Family 22 Member 1 (SLC22A1) Antibody

Catalogue No.: abx027700



Polyspecific organic cation transporters in the liver, kidney, intestine, and other organs are critical for elimination of many endogenous small organic cations as well as a wide array of drugs and environmental toxins. This gene is one of three similar cation transporter genes located in a cluster on chromosome 6. The encoded protein contains twelve putative transmembrane domains and is a plasma integral membrane protein. Two transcript variants encoding two different isoforms have been found for this gene, but only the longer variant encodes a functional transporter. [provided by RefSeq].

**Target:** Solute Carrier Family 22 Member 1 (SLC22A1)

**Clonality:** Polyclonal

**Reactivity:** Human

**Tested Applications:** ELISA, WB, IHC

**Host:** Rabbit

**Recommended dilutions:** WB: 1/1000, IHC-P: 1/10 - 1/50. Not tested in IHC-F. Optimal dilutions/concentrations should be determined by the end user.

**Conjugation:** Unconjugated

**Immunogen:** KLH-conjugated synthetic peptide between 511-539 amino acids from the C-terminal region of human SLC22A1.

**Isotype:** IgG

# Datasheet

Version: 3.0.0

Revision date: 12 Sep 2025



|                            |  |
|----------------------------|--|
| <b>Form:</b>               | Liquid   |
| <b>Purification:</b>       | Purified through a protein A column, followed by peptide affinity purification.  |
| <b>Storage:</b>            | Aliquot and store at -20°C. Avoid repeated freeze/thaw cycles.   |
| <b>UniProt Primary AC:</b> | O15245 ( <a href="#">UniProt</a> , <a href="#">ExPASy</a> )  |
| <b>Gene Symbol:</b>        | SLC22A1  |
| <b>Molecular Weight:</b>   | Calculated MW: 61.2 kDa  |
| <b>Buffer:</b>             | PBS containing 0.09% sodium azide.   |
| <b>Note:</b>               | THIS PRODUCT IS FOR RESEARCH USE ONLY. NOT FOR USE IN DIAGNOSTIC, THERAPEUTIC OR COSMETIC PROCEDURES. NOT FOR HUMAN OR ANIMAL CONSUMPTION. |

For Reference Only