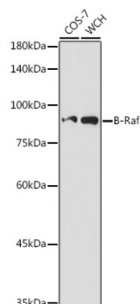


Serine/threonine-Protein Kinase B-Raf (BRAF) Antibody

Catalogue No.: abx002172



Western blot analysis of various lysates using B-Raf Antibody at 1/500 dilution. Secondary antibody: HRP-conjugated Goat anti-Rabbit IgG (H+L) at 1/10000 dilution. Lysates/proteins: 25 µg per lane. Blocking buffer: 3% nonfat dry milk in TBST. Exposure time: 180s.

BRAF Antibody is a Rabbit Polyclonal antibody against BRAF. BRAF: v-raf murine sarcoma viral oncogene homolog B1, also known as BRAF1; RAFB1; B-RAF1; FLJ95109. Entrez Protein NP_004324. It is the main effectors recruited by GTP-bound Ras to activate the MEK-MAP kinase pathway. B-Raf contains three consensus Akt phosphorylation sites (Ser364, Ser428, and Thr439). B-Raf is a key regulatory molecule of the mitogen-activated protein kinase kinase (MEK), it has a long amino-terminal region, the region is essential for homo-dimerization of B-Raf and hetero-dimerization of B-Raf and c-Raf at the plasma membrane, followed by phosphorylation of Thr118 in the amino-terminal B-Raf-specific region. Notably, in calcium ionophore-stimulated HeLa cells, B-Raf could propagate signals to MEK under the basal level of GTP-Ras. Expression of Raf-B is highly restricted with highest levels in the cerebrum and testes and defects in braf are involved in a wide range of cancers. The BRAF gene mutation is frequently detected in papillary thyroid carcinoma, melanocytic nevi, primary cutaneous melanomas and colorectal cancers.

Target:	Serine/threonine-Protein Kinase B-Raf (BRAF)
Clonality:	Polyclonal
Reactivity:	Human, Mouse, Rat
Tested Applications:	ELISA, WB
Host:	Rabbit
Recommended dilutions:	ELISA: 1 µg/ml, WB: 1/100 - 1/500. Optimal dilutions/concentrations should be determined by the end user.
Conjugation:	Unconjugated
Immunogen:	Recombinant protein corresponding to BRAF. The exact sequence is proprietary.
Isotype:	IgG
Form:	Liquid
Purification:	Purified by affinity chromatography.

Datasheet

Version: 6.0.0
Revision date: 13 Aug 2025



Storage: Aliquot and store at -20°C. Avoid repeated freeze/thaw cycles.

UniProt Primary AC: P15056 ([UniProt](#), [ExPASy](#))

Gene Symbol: BRAF

GeneID: [673](#)

NCBI Accession: NP_004324.2

KEGG: hsa:673

String: [9606.ENSP00000288602](#)

Molecular Weight: Calculated MW: 84 kDa
Observed MW: 87 kDa

Buffer: PBS, pH 7.3, containing 0.05% Proclin-300, 50% glycerol.

Concentration: > 0.2 mg/ml

Note: THIS PRODUCT IS FOR RESEARCH USE ONLY. NOT FOR USE IN DIAGNOSTIC, THERAPEUTIC OR COSMETIC PROCEDURES. NOT FOR HUMAN OR ANIMAL CONSUMPTION.

For Reference Only