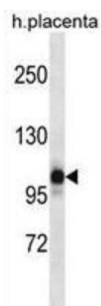
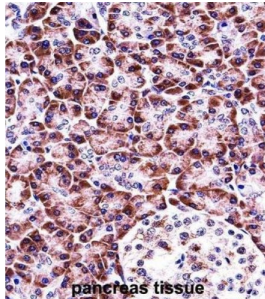


NACHT, LRR And PYD Domains-Containing Protein 12 (NLRP12) Antibody

Catalogue No.: abx027738



This gene encodes a member of the CATERPILLER family of cytoplasmic proteins. The encoded protein, which contains an N-terminal pyrin domain, a NACHT domain, a NACHT-associated domain, and a C-terminus leucine-rich repeat region, functions as an attenuating factor of inflammation by suppressing inflammatory responses in activated monocytes. Alternatively spliced transcript variants encoding distinct isoforms have been described but the full-length nature of some of these has not been determined.

Target: NACHT, LRR And PYD Domains-Containing Protein 12 (NLRP12)

Clonality: Polyclonal

Reactivity: Human

Tested Applications: ELISA, WB, IHC

Host: Rabbit

Recommended dilutions: WB: 1/1000, IHC-P: 1/10 - 1/50. Not tested in IHC-F. Optimal dilutions/concentrations should be determined by the end user.

Conjugation: Unconjugated

Immunogen: KLH-conjugated synthetic peptide between 183-212 amino acids from the N-terminal region of human NLRP12.

Datasheet

Version: 4.0.0

Revision date: 09 Oct 2025



Isotype:	IgG
Form:	Liquid
Purification:	Purified through a protein A column, followed by peptide affinity purification.
Storage:	Aliquot and store at -20°C. Avoid repeated freeze/thaw cycles.
UniProt Primary AC:	P59046 (UniProt , ExPASy)
Gene Symbol:	NLRP12
GeneID:	91662
HGNC:	22938
KEGG:	hsa:91662
String:	9606.ENSP00000375653
Molecular Weight:	Calculated MW: 120 kDa
Buffer:	PBS containing 0.09% sodium azide.
Note:	THIS PRODUCT IS FOR RESEARCH USE ONLY. NOT FOR USE IN DIAGNOSTIC, THERAPEUTIC OR COSMETIC PROCEDURES. NOT FOR HUMAN OR ANIMAL CONSUMPTION.

For Reference Only