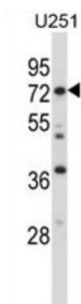


Radixin (RDX) Antibody

Catalogue No.: abx027746



Radixin (RDX) Antibody is a Rabbit Polyclonal against Radixin (RDX). Radixin is a cytoskeletal protein that may be important in linking actin to the plasma membrane. It is highly similar in sequence to both ezrin and moesin. The radixin gene has been localized by fluorescence in situ hybridization to 11q23. A truncated version representing a pseudogene (RDXP2) was assigned to Xp21.3. Another pseudogene that seemed to lack introns (RDXP1) was mapped to 11p by Southern and PCR analyses. Multiple alternatively spliced transcript variants encoding different isoforms have been found for this gene.

Target: Radixin (RDX)

Clonality: Polyclonal

Reactivity: Human

Tested Applications: ELISA, WB

Host: Rabbit

Recommended dilutions: WB: 1/1000. Optimal dilutions/concentrations should be determined by the end user.

Conjugation: Unconjugated

Immunogen: KLH-conjugated synthetic peptide between 466-495 amino acids from the C-terminal region of human RDX.

Isotype: IgG

Form: Liquid

Purification: Purified through a protein A column, followed by peptide affinity purification.

Storage: Aliquot and store at -20°C. Avoid repeated freeze/thaw cycles.

UniProt Primary AC: P35241 ([UniProt](#), [ExPASy](#))

Datasheet

Version: 3.0.0

Revision date: 19 Aug 2025



Gene Symbol:	RDX
GeneID:	5962
OMIM:	179410
NCBI Accession:	NM_002906.3
HGNC:	9944
KEGG:	hsa:5962
Ensembl:	ENSG00000137710
String:	9606.ENSP00000384136
Molecular Weight:	Calculated MW: 68.6 kDa
Buffer:	PBS containing 0.09% sodium azide.
Specificity:	Predicted to react with Cow, Pig and Chicken RDX.
Note:	THIS PRODUCT IS FOR RESEARCH USE ONLY. NOT FOR USE IN DIAGNOSTIC, THERAPEUTIC OR COSMETIC PROCEDURES. NOT FOR HUMAN OR ANIMAL CONSUMPTION.