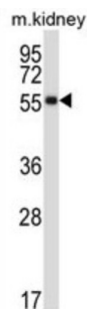


Somatostatin Receptor 1 (SSTR1) Antibody

Catalogue No.: abx027756



Somatostatin acts at many sites to inhibit the release of many hormones and other secretory proteins. The biological effects of somatostatin are probably mediated by a family of G protein-coupled receptors that are expressed in a tissue-specific manner. The encoded protein is a member of the superfamily of somatostatin receptors having seven transmembrane segments, and is expressed in highest levels in jejunum and stomach. [provided by RefSeq].

Target: Somatostatin Receptor 1 (SSTR1)

Clonality: Polyclonal

Reactivity: Mouse

Tested Applications: ELISA, WB

Host: Rabbit

Recommended dilutions: WB: 1/1000. Optimal dilutions/concentrations should be determined by the end user.

Conjugation: Unconjugated

Immunogen: KLH-conjugated synthetic peptide between 351-380 amino acids from the C-terminal region of human SSTR1.

Isotype: IgG

Form: Liquid

Purification: Purified through a protein A column, followed by peptide affinity purification.

Storage: Aliquot and store at -20°C. Avoid repeated freeze/thaw cycles.

UniProt Primary AC: P30872 ([UniProt](#), [ExPASy](#))

Gene Symbol: SSTR1

Datasheet

Version: 2.0.0

Revision date: 06 Mar 2025



KEGG: hsa:6751

String: [9606.ENSP00000267377](#)

Molecular Weight: Calculated MW: 42.7 kDa

Buffer: PBS containing 0.09% sodium azide.

Specificity: Predicted to react with Rat SSTR1.

Note: THIS PRODUCT IS FOR RESEARCH USE ONLY. NOT FOR USE IN DIAGNOSTIC, THERAPEUTIC OR COSMETIC PROCEDURES. NOT FOR HUMAN OR ANIMAL CONSUMPTION.

For Reference Only