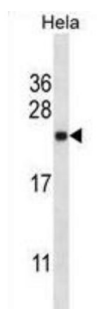
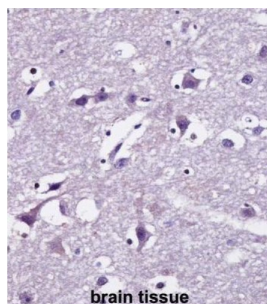


SEC22 Vesicle Trafficking Protein-Like 1 (SEC22B) Antibody

Catalogue No.: abx027778



The protein encoded by this gene is a member of the SEC22 family of vesicle trafficking proteins. It seems to complex with SNARE and it is thought to play a role in the ER-Golgi protein trafficking. This protein has strong similarity to Mus musculus and Cricetulus griseus proteins.

Target:	SEC22 Vesicle Trafficking Protein-Like 1 (SEC22B)
Clonality:	Polyclonal
Reactivity:	Human
Tested Applications:	ELISA, WB, IHC
Host:	Rabbit
Recommended dilutions:	WB: 1/1000, IHC-P: 1/10 - 1/50. Not tested in IHC-F. Optimal dilutions/concentrations should be determined by the end user.
Conjugation:	Unconjugated
Immunogen:	KLH-conjugated synthetic peptide between 75-104 amino acids from the Central region of human SEC22B.
Isotype:	IgG
Form:	Liquid

Datasheet

Version: 2.0.0
Revision date: 06 Mar 2025



Purification:	Purified through a protein A column, followed by peptide affinity purification.
Storage:	Aliquot and store at -20°C. Avoid repeated freeze/thaw cycles.
UniProt Primary AC:	O75396 (UniProt , ExPASy)
Gene Symbol:	SEC22B
KEGG:	hsa:9554
String:	9606.ENSP00000463393
Molecular Weight:	Calculated MW: 24.7 kDa
Buffer:	PBS containing 0.09% sodium azide.
Specificity:	Predicted to react with Mouse, Rat and Hamster SEC22B.
Note:	THIS PRODUCT IS FOR RESEARCH USE ONLY. NOT FOR USE IN DIAGNOSTIC, THERAPEUTIC OR COSMETIC PROCEDURES. NOT FOR HUMAN OR ANIMAL CONSUMPTION.

For Reference Only