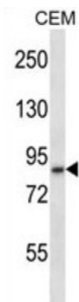


Disintegrin And Metalloproteinase Domain-Containing Protein 11 (ADAM11) Antibody

Catalogue No.: abx027782



This gene encodes a member of the ADAM (a disintegrin and metalloprotease) protein family. Members of this family are membrane-anchored proteins structurally related to snake venom disintegrins, and have been implicated in a variety of biological processes involving cell-cell and cell-matrix interactions, including fertilization, muscle development, and neurogenesis. This gene represents a candidate tumor suppressor gene for human breast cancer based on its location within a minimal region of chromosome 17q21 previously defined by tumor deletion mapping. [provided by RefSeq].

Target:	Disintegrin And Metalloproteinase Domain-Containing Protein 11 (ADAM11)
Clonality:	Polyclonal
Reactivity:	Human
Tested Applications:	ELISA, WB
Host:	Rabbit
Recommended dilutions:	WB: 1/500. Optimal dilutions/concentrations should be determined by the end user.
Conjugation:	Unconjugated
Immunogen:	KLH-conjugated synthetic peptide between 200-228 amino acids from the N-terminal region of human ADAM11.
Isotype:	IgG
Form:	Liquid
Purification:	Purified through a protein A column, followed by peptide affinity purification.
Storage:	Aliquot and store at -20°C. Avoid repeated freeze/thaw cycles.
UniProt Primary AC:	O75078 (UniProt , ExPASy)

Datasheet

Version: 3.0.0

Revision date: 22 Jun 2025



Gene Symbol: ADAM11

KEGG: hsa:4185

String: [9606.ENSP00000200557](https://string-db.org/cgi/show.do?query=ADAM11&organism=hsa)

Molecular Weight: Calculated MW: 83.4 kDa

Buffer: PBS containing 0.09% sodium azide.

Note: THIS PRODUCT IS FOR RESEARCH USE ONLY. NOT FOR USE IN DIAGNOSTIC, THERAPEUTIC OR COSMETIC PROCEDURES. NOT FOR HUMAN OR ANIMAL CONSUMPTION.

For Reference Only