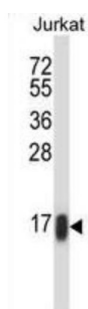
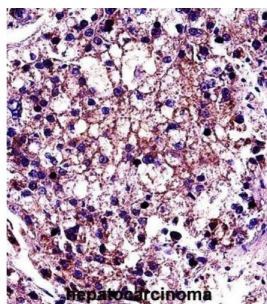


## Rho-Related GTP-Binding Protein RhoC (RHOC) Antibody

Catalogue No.: abx027799



This gene encodes a member of the Rho family of small GTPases, which cycle between inactive GDP-bound and active GTP-bound states and function as molecular switches in signal transduction cascades. Rho proteins promote reorganization of the actin cytoskeleton and regulate cell shape, attachment, and motility. The protein encoded by this gene is prenylated at its C-terminus, and localizes to the cytoplasm and plasma membrane. It is thought to be important in cell locomotion. Overexpression of this gene is associated with tumor cell proliferation and metastasis. Multiple alternatively spliced variants, encoding the same protein, have been identified.

**Target:** Rho-Related GTP-Binding Protein RhoC (RHOC)

**Clonality:** Polyclonal

**Reactivity:** Human, Mouse

**Tested Applications:** ELISA, WB

**Host:** Rabbit

**Recommended dilutions:** WB: 1/2000. Optimal dilutions/concentrations should be determined by the end user.

**Conjugation:** Unconjugated

**Immunogen:** KLH-conjugated synthetic peptide between 102-130 amino acids from the C-terminal region of human RHOC.

**Isotype:** IgG

# Datasheet

Version: 3.0.0

Revision date: 13 Aug 2025



|                            |  |
|----------------------------|--|
| <b>Form:</b>               | Liquid   |
| <b>Purification:</b>       | Purified through a protein A column, followed by peptide affinity purification.  |
| <b>Storage:</b>            | Aliquot and store at -20°C. Avoid repeated freeze/thaw cycles.   |
| <b>UniProt Primary AC:</b> | P08134 ( <a href="#">UniProt</a> , <a href="#">ExPASy</a> )  |
| <b>KEGG:</b>               | hsa:389  |
| <b>String:</b>             | <a href="#">9606.ENSP00000285735</a>   |
| <b>Molecular Weight:</b>   | Calculated MW: 22 kDa  |
| <b>Buffer:</b>             | PBS containing 0.09% sodium azide.   |
| <b>Specificity:</b>        | Predicted to react with Cow RHOC.  |
| <b>Note:</b>               | THIS PRODUCT IS FOR RESEARCH USE ONLY. NOT FOR USE IN DIAGNOSTIC, THERAPEUTIC OR COSMETIC PROCEDURES. NOT FOR HUMAN OR ANIMAL CONSUMPTION. |

For Reference Only