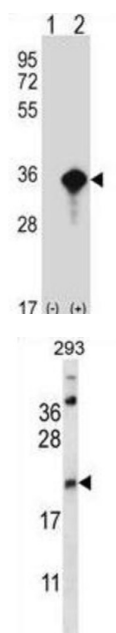


Amino-Terminal Enhancer of Split (AES) Antibody

Catalogue No.: abx027807



The protein encoded by this gene is similar in sequence to the amino terminus of *Drosophila* enhancer of split groucho, a protein involved in neurogenesis during embryonic development. The encoded protein, which belongs to the groucho/TLE family of proteins, can function as a homooligomer or as a heterooligomer with other family members to dominantly repress the expression of other family member genes. Three transcript variants encoding different isoforms have been found for this gene. [provided by RefSeq].

Target: Amino-Terminal Enhancer of Split (AES)

Clonality: Polyclonal

Reactivity: Human

Tested Applications: ELISA, WB

Host: Rabbit

Recommended dilutions: WB: 1/1000. Optimal dilutions/concentrations should be determined by the end user.

Conjugation: Unconjugated

Immunogen: KLH-conjugated synthetic peptide between 156-184 amino acids from the C-terminal region of human AES.

Isotype: IgG

Datasheet

Version: 4.0.0
Revision date: 10 Oct 2025



Form:	Liquid
Purification:	Purified through a protein A column, followed by peptide affinity purification.
Storage:	Aliquot and store at -20°C. Avoid repeated freeze/thaw cycles.
UniProt Primary AC:	Q08117 (UniProt , ExPASy)
KEGG:	hsa:166
String:	9606.ENSP00000221561
Molecular Weight:	Calculated MW: 22 kDa
Buffer:	PBS containing 0.09% sodium azide.
Note:	THIS PRODUCT IS FOR RESEARCH USE ONLY. NOT FOR USE IN DIAGNOSTIC, THERAPEUTIC OR COSMETIC PROCEDURES. NOT FOR HUMAN OR ANIMAL CONSUMPTION.

For Reference Only