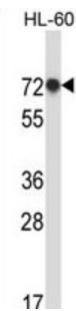


RNA Binding Motif Protein 39 (RBM39) Antibody

Catalogue No.: abx027811



The protein encoded by this gene is an RNA binding protein and possible splicing factor. The encoded protein is found in the nucleus, where it colocalizes with core spliceosomal proteins. Studies of a mouse protein with high sequence similarity to this protein suggest that this protein may act as a transcriptional coactivator for JUN/AP-1 and estrogen receptors. Multiple transcript variants encoding different isoforms have been observed for this gene.

Target: RNA Binding Motif Protein 39 (RBM39)

Clonality: Polyclonal

Reactivity: Human

Tested Applications: ELISA, WB

Host: Rabbit

Recommended dilutions: WB: 1/1000. Optimal dilutions/concentrations should be determined by the end user.

Conjugation: Unconjugated

Immunogen: KLH-conjugated synthetic peptide between 114-143 amino acids from the N-terminal region of human RBM39.

Isotype: IgG

Form: Liquid

Purification: Purified through a protein A column, followed by peptide affinity purification.

Storage: Aliquot and store at -20°C. Avoid repeated freeze/thaw cycles.

UniProt Primary AC: Q14498 ([UniProt](#), [ExPASy](#))

KEGG: hsa:9584

Datasheet

Version: 4.0.0

Revision date: 13 Oct 2025



String: [9606.ENSPO0000253363](#)

Molecular Weight: Calculated MW: 59.4 kDa

Buffer: PBS containing 0.09% sodium azide.

Specificity: Predicted to react with Mouse RBM39.

Note: THIS PRODUCT IS FOR RESEARCH USE ONLY. NOT FOR USE IN DIAGNOSTIC, THERAPEUTIC OR COSMETIC PROCEDURES. NOT FOR HUMAN OR ANIMAL CONSUMPTION.

For Reference Only